


RESEARCH ARTICLE

Open Access



# KbvR mutant of *Klebsiella pneumoniae* affects the synthesis of type 1 fimbriae and provides protection to mice as a live attenuated vaccine

Fusheng Zhang<sup>1</sup>, Yan Meng<sup>2</sup>, Li Xu<sup>3</sup>, Yujiao Tian<sup>1</sup>, Huigai Lu<sup>1</sup>, Jichen Xie<sup>1</sup>, Renhui Ma<sup>1</sup>, Moran Li<sup>1\*</sup>  and Bei Li<sup>1,3\*</sup> 

## Abstract

*Klebsiella pneumoniae* is a leading cause of severe infections in humans and animals, and the emergence of multidrug-resistant strains highlights the need to develop effective vaccines for preventing such infections. Live attenuated vaccines are attractive vaccine candidates available in the veterinary field. We recently characterized that the *K. pneumoniae kbvR* (*Klebsiella* biofilm and virulence regulator) mutant was a highly attenuated strain in the mice model. In the present study, the characterization, safety, and protective efficacy of  $\Delta kbvR$  strain as a live attenuated vaccine were evaluated. The synthesis and activity of type 1 fimbriae were increased in the  $\Delta kbvR$  strain. All mice inoculated by the subcutaneous route with  $10^5$ ,  $10^6$ , and  $10^7$  colony-forming units (CFU) doses of the  $\Delta kbvR$  strain survived. Subcutaneous immunization with two doses of  $10^5$  or  $10^7$  CFU  $\Delta kbvR$  elicited a robust humoral immune response, and provided protection against the following *K. pneumoniae* intraperitoneal infection. The antisera of mice immunized with  $10^5$  CFU dose improved the opsonophagocytic ability and complement-mediated lysis not only to the same serotype strain but also to the different serotype strain. The passive transfer of antisera from  $10^5$  CFU dose-immunized mice provided protection against *K. pneumoniae* infection. Overall, our results suggest the great potential of the  $\Delta kbvR$  strain as a novel vaccine candidate against *K. pneumoniae* infections in herds or humans.

**Keywords:** *Klebsiella pneumoniae*, KbvR, vaccine, immune response

## Introduction

*Klebsiella pneumoniae* is a ubiquitous bacterium that can be found in a wide range of ecological niches including water, soil, vegetation, and insects [1–3]. It also can be recovered from the stools, nasopharyngeal swabs, or urine samples collected from companion and

farm animals, such as dogs, cats, horses, cows, chickens, and pigs. To these animals, it is an essential cause of pneumonia, metritis, septicemia, and mastitis [4–6]. The infection leads to losses in milk production, food contamination, and high mortalities [7–9]. Meanwhile, the *K. pneumoniae* in animal hosts and along the food chain can be transmitted to humans and cause infection [10–12]. Treatment with antibiotics is an important method against bacterial pathogens. However, more than one-third of *K. pneumoniae* isolates in Europe are resistant to at least one class of the antimicrobial agents, and multidrug-resistant (MDR) strains have been recovered in clinical isolates not only from

\*Correspondence: moranli@whu.edu.cn; libei2381@sina.com

<sup>1</sup> School of Basic Medicine, Hubei University of Medicine, Shiyuan 442000, Hubei, China

<sup>3</sup> Biomedical Research Institute, Hubei University of Medicine, Shiyuan 442000, Hubei, China

Full list of author information is available at the end of the article



humans but also from companion animals and livestock [13–15].

Given the increasing multidrug resistance, new strategies are needed to control and prevent infection by MDR *K. pneumoniae* in animals and humans. Vaccination is regarded as another effective method to prevent infectious diseases. To date, there are no vaccines available against *K. pneumoniae* infection and the development of vaccines against *K. pneumoniae* has become a priority in many countries. The schemes for vaccine development against *K. pneumoniae* include whole cell vaccines, ribosomal vaccines, outer membrane vesicles, and virulence factors including capsular polysaccharides (CPS), lipopolysaccharide, and protein-based vaccines [16–21]. Live attenuated vaccines are a mode of whole cell vaccines that are more immunogenic and can elicit long-lasting immune responses than the subunit vaccines, and they have a relatively low production cost. Although the problem of biological safety limits the use of live vaccines, they are suitable to immunizing large communities or herds. The main vaccines used for animals or humans against the infection of *Brucella melitensis*, *Yersinia pestis*, and *Mycobacterium tuberculosis* are still live attenuated vaccines [22–26]. For *K. pneumoniae*, a *tonB* deletion mutant strain can induce a protective immune response against challenge with a wild-type strain [27].

KbvR is a regulator that has been found to reduce biofilm formation and the synthesis of CPS in the *K. pneumoniae* NTUH-K2044 strain. The virulence of the *kbvR* mutant was significantly decreased in the murine model by intraperitoneal injection [28]. RNA-seq results show that the expression levels of type I fimbriae genes such as *fimA* and *fimH* were increased in *K. pneumoniae kbvR* mutant strain [28]. Fimbriae are filamentous structures present on the cell surface of bacteria. The components of fimbriae have been shown to be promising vaccine candidates [29, 30]. The selected T- and B-cell specific epitopes of type I fimbriae FimA, FimF, FimG, and FimH proteins have been estimated to be used as potential vaccine candidates against *K. pneumoniae* infection, and six epitopes confirmed by molecular dynamics can be applied for vaccine development [31, 32]. Thus, the  $\Delta kbvR$  strain might be a potentially viable option for the preparation of vaccines in preventing *K. pneumoniae* infections in humans and animals. In this study, the influence of KbvR on the synthesis of type I fimbriae was investigated. Then, experiments on the safety, antibody test, and protective efficacy of the  $\Delta kbvR$  strain in mice were performed to evaluate the potential of the *kbvR* mutant strain as a live attenuated vaccine.

## Materials and methods

### Bacterial strains and growth conditions

The capsular serotype K1 hypervirulent *K. pneumoniae* strain NTUH-K2044 (WT), the NTUH-K2044 *kbvR* gene deletion strain ( $\Delta kbvR$ ), and the capsular serotype K3 standard *K. pneumoniae* strain ATCC 13,883 were preserved in our laboratory. All strains from frozen stocks were inoculated into Luria–Bertani (LB) broth and grown overnight with shaking at 37 °C. Then, the cultures were diluted 1:100 into fresh LB media the following day and cultured to the desired phase of growth.

### RNA isolation and RT-PCR

Total RNA were extracted from mid-log phase *K. pneumoniae* WT and  $\Delta kbvR$  strains using an RNeasyMidi kit (Qiagen). Purified RNA was DNase-treated with RNase-free DNase I (Qiagen) to eliminate the residual DNA. The quality and quantity of RNA were determined via 1% agarose gel electrophoresis and with a Nano Drop 2000 UV–Vis Spectrophotometer (Thermo Scientific). The first-strand cDNA synthesis was conducted using the first-strand cDNA synthesis kit (Promega) and quantified. The relative expression levels of *fimA* and *fimH* genes in WT and  $\Delta kbvR$  strains were analyzed by agarose gel electrophoresis after amplifying cDNA by PCR. 16 S rRNA was used as the normalized gene. The relative mRNA levels were quantified by densitometry using ImageJ software and then calculated by dividing the densitometry of *fimA/fimH* gene by the corresponding densitometry of 16 S rRNA.

### Yeast agglutination assay

The presence and activity of type I fimbriae at the bacterial cell surface were assessed using the baker's yeast suspended in phosphate-buffered saline (PBS) as previously described [33]. The mid-log phase of statically cultured WT and  $\Delta kbvR$  strains were washed twice and resuspended in PBS with  $10^8$  colony-forming units (CFU)/mL. Equal cell number of 50  $\mu$ L yeast cell suspension and 50  $\mu$ L different bacterial suspensions were mixed on a glass slide. After shaking at room temperature for 3 min, the aggregation was assessed by visual inspection.

### Transmission electron microscopy

The WT or  $\Delta kbvR$  strain was statically cultured in LB broth for 10 h and suspended in 1 mL of PBS for negative staining to observe the fimbriae directly [34]. A glow-discharged formvar-coated copper grid was floated on a drop of each bacterial suspension liquid for 3 min. Then, the excess liquid was drained off with filter paper, and the copper grid was stained with uranyl acetate for another 3 min followed by air-drying. The specimens were viewed

under a transmission electron microscope (HT7800, Japan) operated at an accelerating voltage of 120 kV.

#### Mouse subcutaneous infections

Five- to six-week-old female BALB/c mice were obtained from HUNAN SJA laboratory animal Co., Ltd. to determine the virulence of  $\Delta kbvR$  in mice by subcutaneous route. The NTUH-K2044 WT and  $\Delta kbvR$  strains were cultured to  $OD_{600}=1.2$  in LB broth and serially 10-fold diluted with sterile PBS. Appropriate dilutions were plated onto LB agar plates to calculate the numbers of CFU. A total of 10 mice for each group gathered from two experiments were injected subcutaneously with  $10^5$ ,  $10^6$  CFU WT or  $10^5$ ,  $10^6$ ,  $10^7$  CFU  $\Delta kbvR$ . The mice were monitored daily for 14 days, and the survival rates were calculated to analyze the virulence of  $\Delta kbvR$  by subcutaneous route.

#### Mouse immunizations and challenge experiments

Two different groups of BALB/c mice were respectively immunized with a low dose ( $10^5$  CFU) or high dose ( $10^7$  CFU)  $\Delta kbvR$  strain in 100  $\mu$ L PBS two times for 4 weeks at 2-week intervals by subcutaneous route. The mice immunized with PBS were used as a normal control. All mice were monitored for skin reaction and weighed daily. At 28 days after the first immunization, the serum samples were collected from immunized ( $n=10$  for  $10^5$  CFU dose from two experiments and  $n=5$  for  $10^7$  CFU dose) and normal control ( $n=10$  from two experiments) mice to evaluate antibody production by enzyme-linked immunosorbent assay (ELISA). The liver, spleen, and lungs of the mice were processed, paraffin-embedded, microtome sectioned, and stained with hematoxylin and eosin to determine histopathological changes using an Olympus DP74 camera.

Two weeks after the second immunization, the mice ( $10^5$  CFU  $\Delta kbvR$ -immunized group and PBS control group) were infected with  $10^4$  or  $10^5$  CFU log-phase *K. pneumoniae* WT strain via intraperitoneal route. At the 12 h post-infection, five immunized or control mice challenged by  $10^5$  CFU WT strain were sacrificed. The blood was collected and plated onto LB plate to calculate the number of bacteria. Then, 3 mL LB medium was injected into the abdominal cavity of the mice. A total of 10  $\mu$ L peritoneal lavage fluid was collected and serially diluted to calculate the bacterial number, while another 10  $\mu$ L peritoneal lavage fluid was coated onto the slides and stained via the gram stain method to be observed by optical microscopy. Thereafter, the liver, spleen, and lungs were removed aseptically, weighed, and homogenized in PBS using a tissue homogenizer. The samples were serially diluted and spread on LB agar plate containing 100  $\mu$ g/mL ampicillin to determine the bacterial counts.

The remaining mice challenged by  $10^4$  or  $10^5$  CFU WT ( $n=7$  for each PBS control group and  $n=8$  for each immunized group) were observed every day for the next 14 days to evaluate the survival rate.

#### Enzyme-linked immunosorbent assay

Relative antibody levels in mice were determined by ELISA [35]. First, 96-well flat-bottom plates were coated with 100  $\mu$ L lysate of whole NTUH-K2044 WT cells. This WT strain was grown in LB broth to  $OD_{600}=1.2$ , collected by centrifugation, resuspended in PBS, and lysed by sonication. After overnight incubation at 4  $^{\circ}$ C, plates were washed three times with PBS including 0.05% Tween-20 (PBST), blocked with 5% nonfat dry milk for 1 h, and washed three times with PBST. The serum samples of immunized or normal control mice were diluted 1:400. The resulting titer was corrected at an optical density of 450 nm to about 0.1 of control serum, and 100  $\mu$ L was applied per well followed by 1.5 h incubation at 37  $^{\circ}$ C. After washing with PBST, 100  $\mu$ L of 1:3000 horseradish peroxidase-conjugated goat anti-mouse immunoglobulin G (IgG) antibodies was added and incubated at 37  $^{\circ}$ C for 1 h. The color was developed for 10 min in the dark by addition of 100  $\mu$ L 3, 30, 5, 50-tetramethylbenzidine, and the reaction was stopped by adding 100  $\mu$ L 2 M  $H_2SO_4$ . The optical density of the reaction was recorded at 450 nm using an ELISA plate reader and corrected by subtracting the optical density of a blank control.

#### Opsonophagocytic assay

For an opsonophagocytic assay, plasmid pLac-EGFP with a gene encoding green fluorescence protein was electroporated into *K. pneumoniae* NTUH-K2044 and ATCC 13,883 strains. The bacteria were cultured in LB at 37  $^{\circ}$ C to  $OD_{600}=1.2$ , washed with PBS, and adjusted to approximately  $10^7$  CFU/mL in RPMI 1640 medium. RAW264.7 macrophage cells were seeded in 24-well glass bottom culture plates and cultured in RPMI 1640 medium containing 2 mM glutamine and 10% (v/v) fetal calf serum [36]. For the opsonophagocytic assay, macrophages were infected with bacteria (NTUH-K2044 or ATCC 13,883) at a multiplicity of infection (MOI) of 50 bacteria/macrophage and 1  $\mu$ L pooled immunized or normal mice sera ( $n=5$  for each group) in a 1100  $\mu$ L reaction at 37  $^{\circ}$ C. After 120 min of contact, cells were washed twice with PBS and incubated for an additional 90 min with RPMI 1640 medium in the presence of 500  $\mu$ g/mL gentamicin to eliminate the remaining extracellular bacteria. Then, the cells were washed, fixed, and stained with Alexa Fluor 594 dye (red) for actin cytoskeleton and DAPI (blue) for host cell nuclei. Finally, the cells were observed by confocal microscopy. For the opsonophagocytic activity against NTUH-K2044, the sum of the intracellular bacteria in

the macrophages in different fields were calculated and quantified within 300 cells. For the opsonophagocytic activity against ATCC 13,883, the washed cells were lysed with 0.5% Triton X-100 and serial dilutions were plated on LB agar to quantify intracellular bacteria. The mean opsonophagocytic ratio of sera to ATCC 13,883 was determined using the formula =  $100 \cdot \text{CFU of intracellular phagocytized bacteria} / \text{CFU of input bacteria}$ . Experiments were conducted on three independent occasions [36].

#### Complement-mediated antibacterial test

The complement-mediated antibacterial test was performed as previously described [36, 37]. The pooled immunized or normal mice sera ( $n=5$ ) were heat-inactivated in a 56 °C water bath for 1 h. A total of  $10^6$  bacterial cells (*K. pneumoniae* strain NTUH-K2044 or ATCC 13,883) were co-incubated with 25% (v/v) human serum (providing the complement) donated by healthy volunteers with or without 5  $\mu\text{L}$  heat-inactivated mice sera in a 50  $\mu\text{L}$  reaction at 37 °C for 2 h. The colony count was calculated by the serial dilution method. The mean survival ratio was determined using the formula =  $100 \cdot \text{CFU of experimental wells with mice sera} / \text{CFU of control wells without mice sera}$ .

#### Mouse passive immunization and challenge assay

For passive immunization experiments, the sera from 5 mice immunized with two doses of  $10^5$  CFU *K.*

*pneumoniae*  $\Delta kbvR$  strain (immunized sera) or from 5 mice injected with PBS (normal sera) were collected and pooled respectively. Then, pooled sera from immunized or normal mice were passively transferred to groups of 5 naïve female BALB/c mice in the dose of 1  $\mu\text{L}$  respectively along with 100  $\mu\text{L}$   $10^4$  CFU WT by intraperitoneal route. Mice were observed daily for 14 days, and survival was monitored [21].

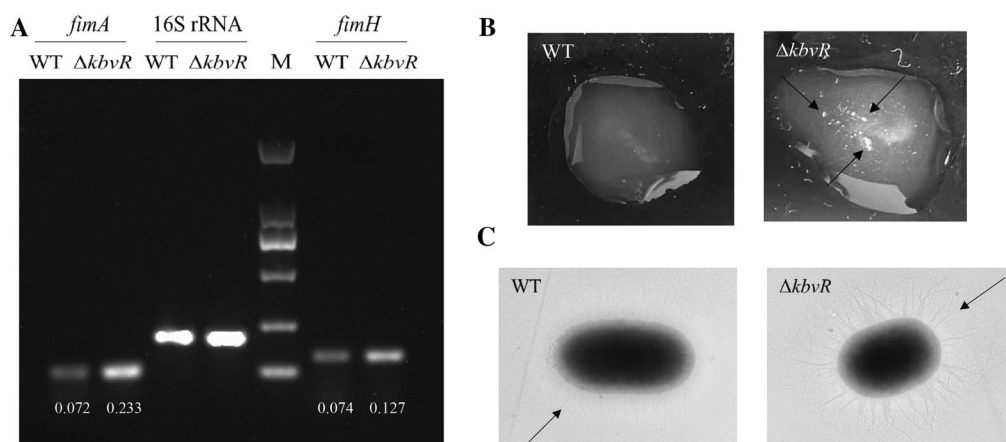
#### Statistical analyses

The data were presented either as mean  $\pm$  standard error (SD). A Mantel–Cox (log-rank) test was used to compare the survival curves, and the Student *t*-test was used for the statistical comparisons between the two groups.

## Results

### Type 1 fimbriae biosynthesis is increased in *kbvR* mutant strain

In our previous study, the RNA-seq results show that the transcription levels of gene cluster associated with type I fimbriae synthesis were increased in the  $\Delta kbvR$  strain (NCBI GenBank: No. SAMN17192750–SAMN17192755) [28]. The RT-PCR confirmed that the transcription levels of *fimA* and *fimH*, the genes that encode the major subunit protein and the adhesion of type I fimbriae, respectively, were increased in the *kbvR* mutant strain. The relative mRNA levels of *fimA* and *fimH* in  $\Delta kbvR$  and WT were 0.233 versus 0.072 and 0.127 versus 0.074, respectively (Figure 1A). The yeast agglutination assay and



**Figure 1** *KbvR* negatively regulates the expression of type I fimbriae. **A** mRNA levels of *fimA* and *fimH* genes were detected by RT-PCR. The overnight cultures of WT and  $\Delta kbvR$  strains were diluted 1:100 into fresh LB media and cultured to mid-log phase at 37 °C. Total RNA were extracted and RT-PCR was conducted with 16 S rRNA as the normalized gene. The relative mRNA levels of *fimA* and *fimH* genes were analyzed by agarose gel electrophoresis, quantified by densitometry using ImageJ software, and calculated by dividing the densitometry of *fimA/fimH* gene by the corresponding densitometry of 16 S rRNA. **B** Yeast agglutination assay. The mid-log phase WT and  $\Delta kbvR$  cultures ( $10^8$  CFU/mL, 50  $\mu\text{L}$ ) were mixed with equal cell numbers of 50  $\mu\text{L}$  yeast cell suspension and shaken at room temperature for 3 min. Large clumps (with arrows indicated) were observed in the  $\Delta kbvR$  strain compared with those in WT. **C** Transmission electron microscopy images of *K. pneumoniae* NTUH-K2044 and its  $\Delta kbvR$  mutant, and arrows indicate the fimbriae.

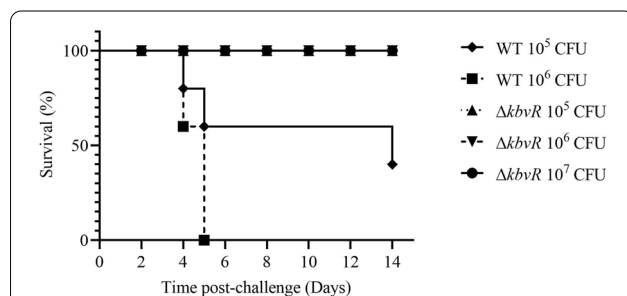
transmission electron microscopy were used to directly observe the activity and production of type I fimbriae. As shown in Figure 1B, the  $\Delta kbvR$  strain gave obvious clumps in a clear solution, whereas little agglutination was observed for WT at the same number of cells, indicating more type I fimbriae on the surface of  $\Delta kbvR$  than on that of WT, which mediated stronger yeast agglutination. The transmission electron microscopy images also show the existence of a large number of fimbriae on the surface of  $\Delta kbvR$  compared with that of WT (Figure 1C). These results suggest that  $KbvR$  negatively regulated the synthesis and activity of type I fimbriae.

#### $\Delta kbvR$ strain injected subcutaneously is avirulent in the mouse model

The 50% lethal dose ( $LD_{50}$ ) was equal to  $5 \times 10^2$  CFU for WT and more than  $5 \times 10^5$  CFU for  $\Delta kbvR$  by intraperitoneal infection [28]. To assess the virulence of the  $\Delta kbvR$  strain infected by the subcutaneous route, the possible immunization route of live vaccine, the survival rate of mouse model infected subcutaneously by  $10^5$ ,  $10^6$  CFU WT and  $10^5$ ,  $10^6$ ,  $10^7$  CFU  $kbvR$  mutant strains were calculated for 14 days. The  $\Delta kbvR$  strain was also highly attenuated via the subcutaneous route. All mice infected by  $10^6$  CFU WT died in 5 days, and the survival rate was decreased to 40% in the mice infected by  $10^5$  CFU WT. On the contrary, no deaths occurred in the  $\Delta kbvR$ -infected groups which were even challenged by the  $10^7$  CFU dose (Figure 2).

#### Subcutaneous immunization with $kbvR$ strain stimulates humoral immune response

Given that  $\Delta kbvR$  could be a live attenuated vaccine candidate, the concentration of IgG in the mice immunized with two doses of  $10^5$  or  $10^7$  CFU  $\Delta kbvR$  at 2-week intervals were quantified by ELISA assay. All immunized mice mounted IgG antibody response to whole *K. pneumoniae*



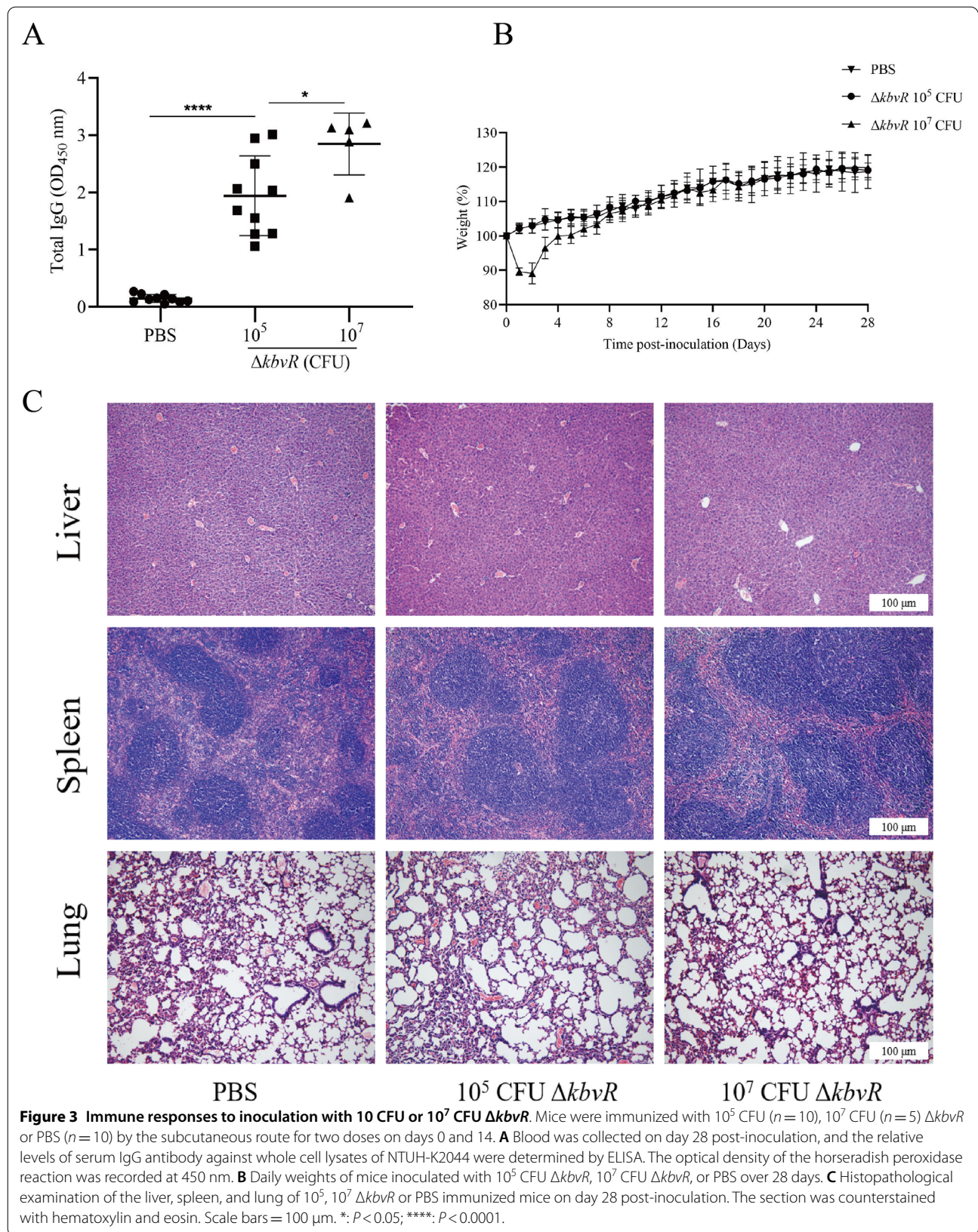
**Figure 2** Survival curves for the *K. pneumoniae* WT and  $\Delta kbvR$  strains by subcutaneous infection. A total of 5 groups of 10 five- to six-week-old female BALB/c mice were injected subcutaneously with  $10^5$ ,  $10^6$  CFU WT or  $10^5$ ,  $10^6$ ,  $10^7$  CFU  $\Delta kbvR$ , and the survival rate was measured for 14 days ( $P < 0.0001$ ).

lysates at day 28 post-immunization, and the concentration was significantly higher than that of the PBS control group ( $P < 0.0001$ ). The results indicate a positive effect of the  $\Delta kbvR$  strain on antibody induction. The  $10^7$  CFU-immunized group had even higher antibody concentration than the  $10^5$  CFU-immunized group ( $P < 0.05$ ), suggesting that the increase in the immunized  $\Delta kbvR$  dose might improve vaccine efficacy (Figure 3A).

The weights and the skin changes in the injection sites of mice throughout the immunization were measured as indicators of side effects. No skin changes at the sites of injection and weight loss were observed in all mice inoculated with  $10^5$  CFU  $\Delta kbvR$ . However, mice initially inoculated with  $10^7$  CFU  $\Delta kbvR$  had significantly lower weights (about 12%) than PBS-inoculated controls from days 1–6 post the first inoculation ( $P < 0.05$ ), and local adverse reactions such as skin lesion and a local hair loss at the injection site were observed (Figure 3B). These differences were significant when analyzed by mixed ANOVA study. The mice recovered their body weight on day 8, and no significant weight differences from PBS control were observed after the second administration. The liver, spleen, and lungs of PBS control,  $10^5$ , or  $10^7$  CFU  $\Delta kbvR$ -inoculated mice were examined histologically at 28 days after the first injection to further investigate the virulence and safety of  $\Delta kbvR$  in mice. No histological lesions and inflammatory infiltrate were observed in any examined organ (Figure 3C). These data demonstrate that, although the  $10^7$  CFU-immunized dose induced higher humoral response, it also might have the local side effect. A dose of  $10^5$  CFU  $\Delta kbvR$  which was well within the range of safe and immunogenic doses was chosen for further evaluation.

#### $\Delta kbvR$ immunization induces protection against *K. pneumoniae* intraperitoneal challenge

The attenuated virulence and stimulated antibody production of  $kbvR$  mutant strain made it a candidate for consideration as a live attenuated vaccine. Thus, the ability of  $\Delta kbvR$  strain to confer protection against lethal intraperitoneal challenge with hypervirulent *K. pneumoniae* strain NTUH-K2044 (WT,  $LD_{50} = 500$  CFU) was tested. BALB/c mice were subcutaneously immunized with  $10^5$  CFU  $\Delta kbvR$  or PBS control at two doses, 14 days apart. A total of 2 weeks after the second vaccination, mice were intraperitoneally challenged with  $10^4$  or  $10^5$  CFU WT. At 12 h after the challenge, 5 mice of immunized or normal control mice infected with  $10^5$  CFU WT were sacrificed. The peritoneal washes were smeared, stained, and observed with a microscope. No bacteria were observed in the peritoneal lavage fluids of immunized mice. However, plenty of *K. pneumoniae* were found in the abdominal cavities



of control mice (Figure 4A and B). The blood, peritoneal washes, liver, lungs, and spleen were harvested to calculate the bacterial number. Immunized mice exhibited significant reductions in organ colonization in the peritoneal washes (1.86-log reduction), liver (1.9-log reduction), spleen (1.6-log reduction), lungs (1.74-log reduction), and blood (3.45-log reduction) compared with the bacterial number of PBS controls (Figure 4C and D). Three of five immunized mice exhibited no detectable bacterial colonization in the blood. By 2 weeks post-challenge, none of the control mice survived beyond 48 h. By contrast, the immunized group had survival rates of 100% and 87.5% for  $10^4$  CFU and  $10^5$  CFU challenge, respectively (Figure 4E). Overall, these results suggest that the immunization with  $10^5$  CFU  $\Delta kbvR$  conferred significant protection in mice against *K. pneumoniae* challenge.

#### Antisera from immunized mice increase uptake of *K. pneumoniae* by macrophages in vitro

We measured the ability of the antibodies in immunized sera to promote *K. pneumoniae* uptake by opsonophagocytic assays for determining their functional activity. Phagocytic assay revealed that NTUH-K2044 was rarely presented inside macrophages without adding sera (Figure 5A). Although the addition of normal sera from PBS control mice increased the phagocytic activity of macrophages, the pooled sera from  $\Delta kbvR$  immunized mice show statistically significant enhancement in opsonophagocytic activity compared with the pooled normal sera, whose anti-*Klebsiella* titers were 1:3200 and 1:400 respectively. The average opsonophagocytized NTUH-K2044 were about 80 and 30 within 300 macrophages respectively ( $P < 0.0001$ ) (Figure 5B). The opsonophagocytic assay of the sera against the *K. pneumoniae* serotype K3 strain ATCC 13,883 was also tested to evaluate whether the sera antibodies generated by immunization with the serotype K1 NTUH-K2044  $\Delta kbvR$  cross-reacted with the other *K. pneumoniae* serotype. The anti-phagocytosis ability of ATCC 13,883 against macrophage was much lower than that of NTUH-K2044 (Figure 5A), which may be partly due to the difference in CPS. Meanwhile, the pooled sera from mice immunized with two doses of serotype K1  $\Delta kbvR$  strain were also able to significantly increase macrophage uptake of ATCC 13,883 over the normal sera from PBS immunized animals (7.175% versus 4.575%,  $P < 0.05$ ) (Figure 5C). The antisera provided the opsonophagocytic activity not only to the K1 serotype but also to the K3 serotype strain, which implied that immunization with the *kbvR* gene deletion strain of K1 serotype might confer cross-protective immunity against other serotypes of *K. pneumoniae*.

#### Antisera from immunized mice increase complement-mediated lysis of *K. pneumoniae*

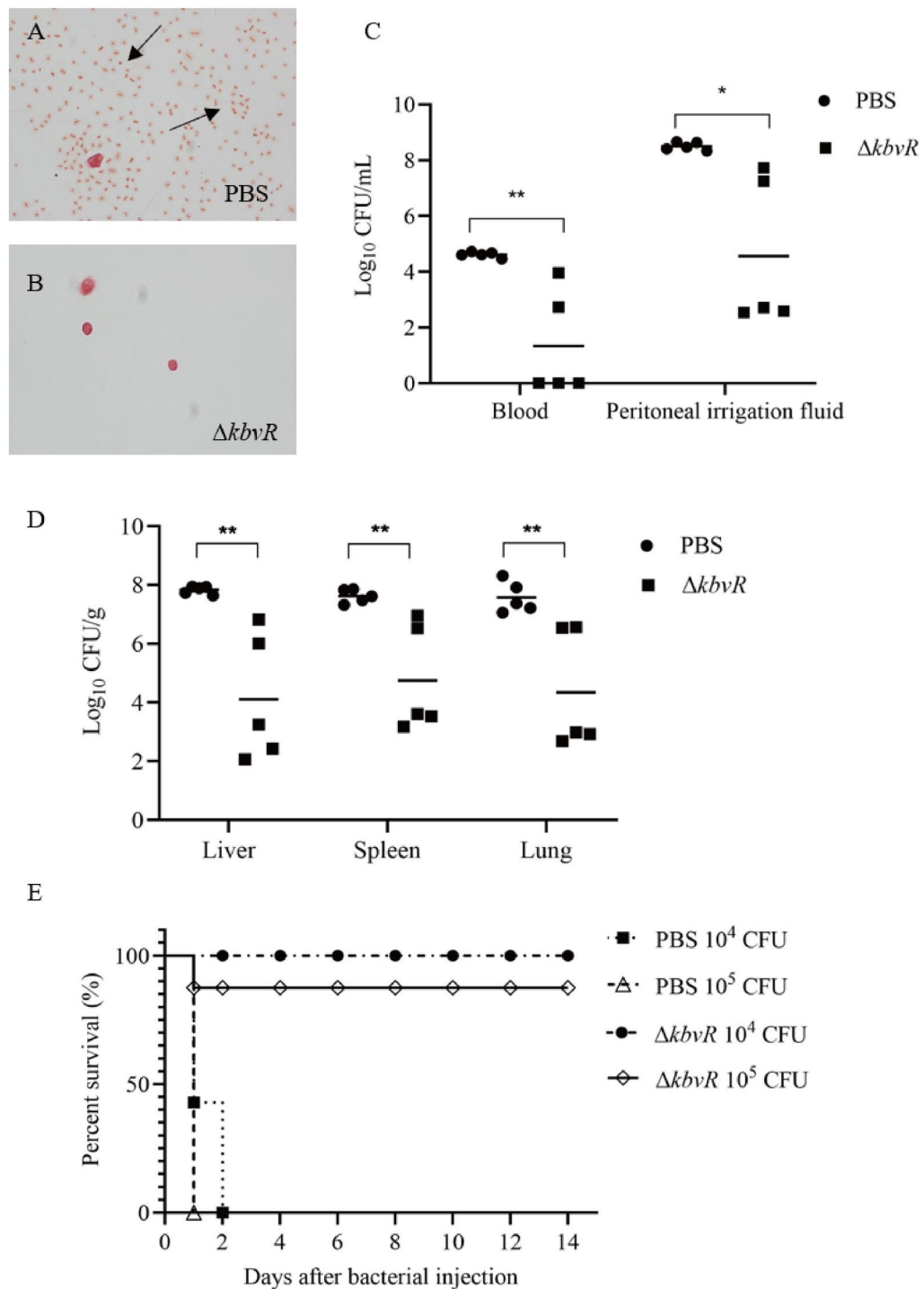
Complement activation is an important component of the innate immunity of the antibacterial immunity. We characterized the complement activation by mice immunized sera in vitro to test whether antisera from immunized mice can increase complement-mediated lysis of *K. pneumoniae*. The *K. pneumoniae* NTUH-K2044 or ATCC 13,883 strain was incubated with the heat-inactivated immunized or normal mice sera, along with human sera as a complement. Compared to the lysis induced by normal sera, the survival rate induced by the immunized sera against NTUH-K2044 and ATCC 13,883 were both significantly decreased (66.4% versus 95.9%; and 63% versus 90%) (Figure 6). The above-mentioned results suggest strong complement activation after immunization with  $\Delta kbvR$ , which might contribute to improving the antibacterial ability of the host immune system.

#### Passivetransfer of antisera from immunized mice provides protection against *K. pneumoniae* infection

We determined whether passive transfer of immunized sera to naïve mice could provide protection against infection of *K. pneumoniae* to examine the protective role of antibodies in vivo. Pooled sera ( $n = 5$ ) were obtained from BALB/c mice immunized with  $10^5$  CFU  $\Delta kbvR$  (immunized sera) or PBS control (normal sera). The 1  $\mu$ L pooled immunized or normal sera were intraperitoneally injected into naïve mice ( $n = 5$  per group) together with 100  $\mu$ L *K. pneumoniae* WT (approximately  $10^4$  CFU). All mice that were passively transferred with normal sera succumbed to infection within 2 days after injection. On the contrary, all mice treated with immunized sera resolved the infection for 8 days and 40% mice survived for 14 days (Figure 7). These results support the idea that passive transfer of immunized sera is protective against *K. pneumoniae* lethal infection in mice.

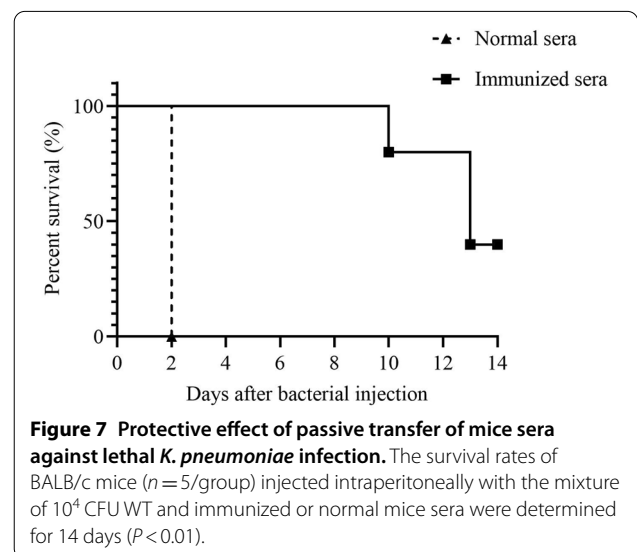
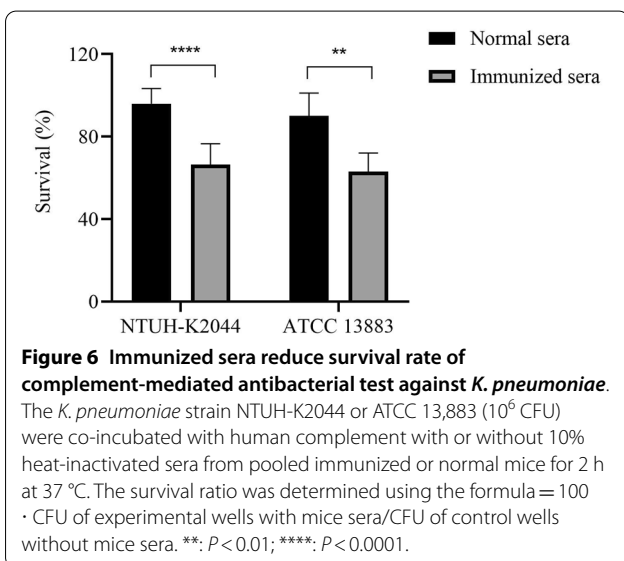
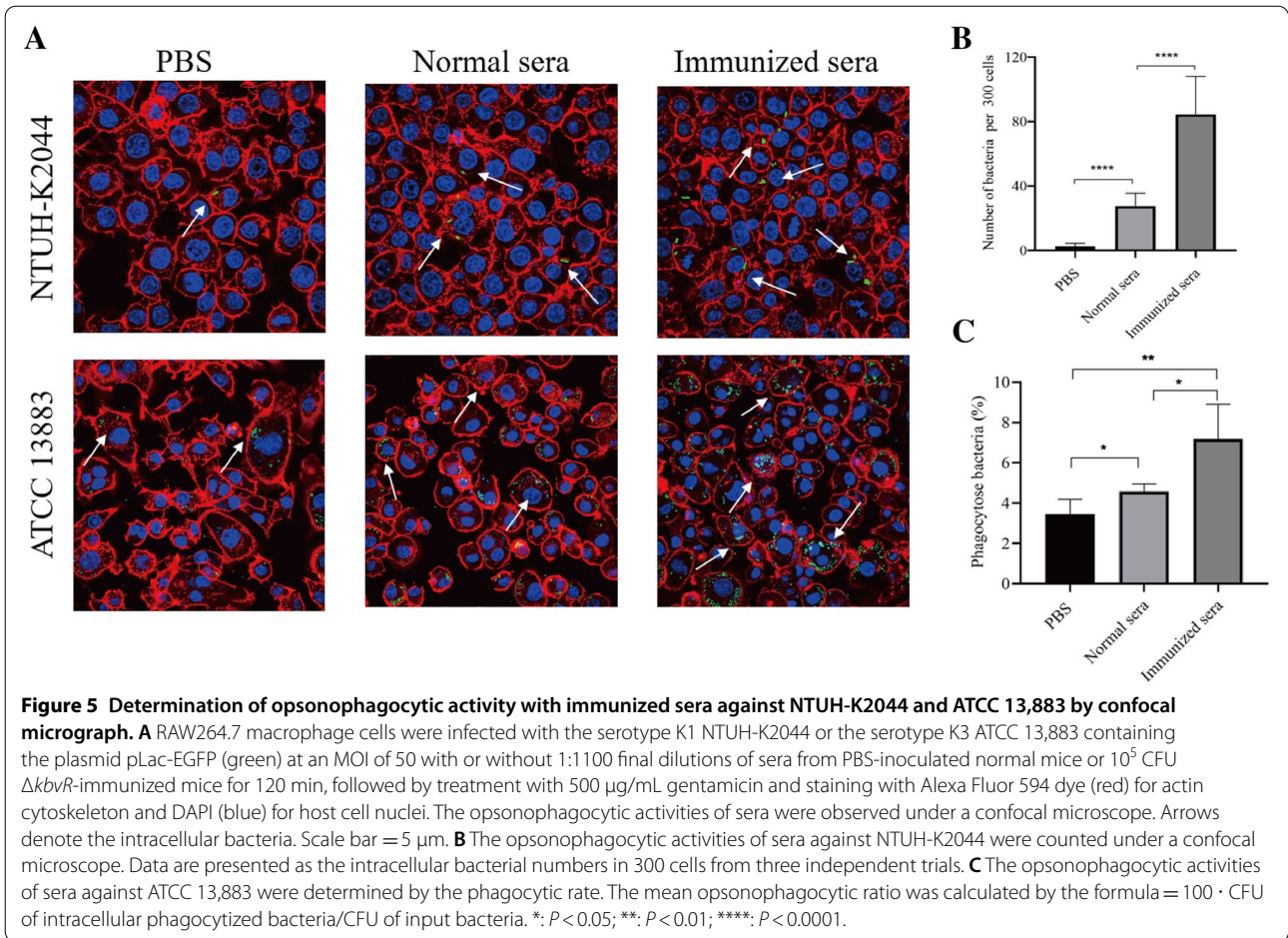
#### Discussion

*Klebsiella pneumoniae* is an emerging zoonotic pathogen that causes various severe infections in humans and animals, and these infections become untreatable due to the emergence of MDR strains [11, 38]. Therefore, vaccines against *K. pneumoniae* that prevent infection in veterinary practices and humans need to be developed urgently. Among the efforts, live attenuated vaccines are still an appealing approach for animals because of their high immunogenic potential, a greater number of different immunogens, and ability to elicit long-lasting protection. The basic requirements for live vaccines are to reduce the virulence and ensure they contain the highest number of antigenic determinants



**Figure 4**  $\Delta kbvR$  immunization induces protection against *K. pneumoniae* intraperitoneal challenge. Two doses of  $10^5$  CFU  $\Delta kbvR$  strain immunized mice ( $n = 21$ ) or PBS ( $n = 19$ ) inoculated normal mice were intraperitoneally infected with  $10^4$  ( $n = 15$ ) or  $10^5$  ( $n = 25$ ) CFU log-phase wild-type strain 2 weeks after the second immunization. **A, B** Peritoneal lavage fluids of immunized ( $n = 5$ ) or normal mice ( $n = 5$ ) were collected, stained, and observed with a microscope at 12 h after being infected with  $10^5$  CFU WT. Arrows indicate the bacteria. **C, D** Number of bacteria in peritoneal washes, liver, spleen, lung, and blood of immunized or normal mice were determined at 12 h after infection with  $10^5$  CFU WT. **E** Survival curves of immunized or normal mice challenged with  $10^4$  or  $10^5$  CFU WT ( $n = 7$  for each PBS group and  $n = 8$  for each  $\Delta kbvR$  immunized group) ( $P < 0.0001$ ).





necessary for inducing protective immunity [39]. In *K. pneumoniae*, the CPS, fimbriae antigens (type I fimbriae and type III fimbriae), and outer membrane proteins (OmpK36 and OmpA) were proven to be potential antigenic determinants for the development of subunit vaccines [17]. Our previous study found that KbvR was associated with the virulence and the synthesis of CPS in *K. pneumoniae* NTUH-K2044 [28]. The decreased expression of CPS in NTUH-K2044  $\Delta kbvR$  contributes to the attenuation of strain, and the maintained CPS on the surface of  $\Delta kbvR$  strain should still stimulate the protective immune response against the infection of serotype K1 strain. Except for CPS, the synthesis of type I fimbriae was found to be negatively regulated by KbvR and the expression level of type I fimbriae was increased in the  $\Delta kbvR$  strain. Therefore, the weakened physical shielding effect of CPS on the fimbriae along with the reduction in CPS, and the increased synthesis of type I fimbriae on the surface, ultimately enhanced the activity and the chance of type I fimbriae to contact with the immunity system. The highly conserved fimbriae components have been generally shown to be promising candidates for inclusion in vaccines [40–42]. In addition, the structural proteins of type 1 fimbriae have been confirmed as effective protein carriers and immunogens in conjugates [43, 44]. Overall, the maintained CPS and the increased synthesis of type 1 fimbriae made  $\Delta kbvR$  strain a promising live attenuated vaccine that can provide broad antigen exposure and serve as intrinsic adjuvant properties to prime durable immune responses.

Given that  $\Delta kbvR$  could be a live attenuated vaccine candidate, we chose to further characterize the safety and protective effect of this strain using the murine model by subcutaneous route, a used delivery method for live attenuated vaccine. The findings indicated a positive effect of  $\Delta kbvR$  on antibody induction and that the immunization of the  $\Delta kbvR$  strain can stimulate the dose-dependent humoral immune response. The  $10^7$  CFU dose-immunized group had higher antibody concentration than the  $10^5$  CFU dose-immunized group. Although the mice immunized by  $10^5$  CFU  $\Delta kbvR$  strain could provide 100% protection against the  $10^4$  CFU WT strain by intraperitoneal challenge, one mouse died among  $10^5$  CFU-challenged mice. When the higher dose  $10^7$  CFU was used for immunization, 100% protection against  $10^5$  CFU challenge at 14 days or even at 42 days after the second immunization were provided (data not shown). However, mice initially inoculated with  $10^7$  CFU  $\Delta kbvR$  strain had significantly lower weights and had a local skin side effect. Therefore, the optimum immune dose of  $\Delta kbvR$  with the best protective effect and safety will be fully evaluated in the future.

*Klebsiella pneumoniae* especially K1/K2 serotype strains resist to phagocytosis and complement-mediated killing through the thick capsule at the cell surface [45]. The serum from patients with recurrent *K. pneumoniae* liver abscess increased the opsonizing and killing efficacy, suggesting that the humoral immune response plays an important role in eliminating bacterial infection [46, 47]. In this study, the opsonophagocytic assay and in vitro serum bactericidal activity demonstrated that the mice antisera from  $10^5$  CFU  $\Delta kbvR$ -immunized group prompted efficient phagocytosis by macrophages and induced complement-mediated lysis not only against the homologous (K1) serotype strain but also against the heterologous (K3) serotype strain. Thus, the broad immunogens of the live NTUH-K2044  $\Delta kbvR$  strain might provide a cross humoral protection to other serotype strains. The passive transfer of antisera from  $\Delta kbvR$  immunized mice to naïve mice provided protection against *K. pneumoniae* infection in vivo. The immunization with  $\Delta kbvR$  strain at  $10^5$  CFU dose induced an effective antibody protection against infection.

In conclusion, we evaluated the safety and protective effect of KbvR regulator mutant strain. The results suggest that the  $\Delta kbvR$  strain can provide protection against the same serotype and different serotypes, which implies its potential as a live attenuated vaccine against *K. pneumoniae* infection in animals or humans. In the future, the selection of an appropriate immunization dose of the  $\Delta kbvR$  strain which balances between attenuation and immunogenicity, and the cross-protective effect of  $\Delta kbvR$  against additional *K. pneumoniae* serotype strains and MDR strains should be studied subsequently to provide a theoretical basis for developing a commercial vaccine.

#### Acknowledgements

The authors want to thank Enpapers (Jinan, China) who provided professional writing services, and our colleagues who provided technical and practical assistance.

#### Authors' contributions

BL designed the research project and wrote the manuscript. FZ and YM performed all major experiments. LX and YT participated in feeding and dissecting the mice. HL and ML completed the microscopy scanning. JX and RM participated in cell culture. ML performed the data analyses. All authors read and approved the final manuscript.

#### Funding

This work was funded by Hubei Province's Outstanding Medical Academic Leader Program, the National Natural Science Foundation of China (81902034), the Innovative Research Program for Graduates of Hubei University of Medicine (YC2022002), the Advantages Discipline Group (Public health) Project in Higher Education of Hubei Province (2021–2025) and the Cultivating Project for Young Scholar at Hubei University of Medicine (2021QDJZR021).

#### Declarations

##### Ethics approval and consent to participate

All animal experiments were approved by the Animal Care and Use Committee of Hubei University of Medicine (Reference Number: HBMU 2021 – 108)

and complied with all ethical and husbandry regulations. The use of human serum was approved by the Institutional Review Board of Hubei University of Medicine and Dongfeng General Hospital affiliated to Hubei University of Medicine (Reference Number: 2021-TH-107).

### Competing interests

The authors declare that they have no competing interests.

### Author details

<sup>1</sup>School of Basic Medicine, Hubei University of Medicine, Shiyan 442000, Hubei, China. <sup>2</sup>School of Biomedical Engineering, Hubei University of Medicine, Shiyan 442000, Hubei, China. <sup>3</sup>Biomedical Research Institute, Hubei University of Medicine, Shiyan 442000, Hubei, China.

Received: 14 June 2022 Accepted: 30 August 2022

Published online: 26 November 2022

### References

1. Bagley ST (1985) Habitat association of *Klebsiella* species. *Infect Control* 6:52–58
2. Melo-Nascimento A, Treumann C, Neves C, Andrade E, Andrade AC, Edwards R, Dinsdale E, Bruce T (2018) Functional characterization of ligninolytic *Klebsiella* spp. strains associated with soil and freshwater. *Arch Microbiol* 200:1267–1278
3. Poudel A, Hathcock T, Butaye P, Kang Y, Price S, Macklin K, Walz P, Cattley R, Kalalah A, Adekanmbi F, Wang C (2019) Multidrug-resistant *Escherichia coli*, *Klebsiella pneumoniae* and *Staphylococcus* spp. in houseflies and blowflies from farms and their environmental settings. *Int J Environ Res Public Health* 16:3583
4. Ribeiro MG, de Morais ABC, Alves AC, Bolaños CAD, de Paula CL, Portilho FVR, de Nardi Júnior G, Lara GHB, de Souza Araújo Martins L, Moraes LS, Riseti RM, Guerra ST, Bello TS, Siqueira AK, Bertolini AB, Rodrigues CA, Paschoal NR, de Almeida BO, Listoni FJP, Sánchez LFG, Paes AC (2022) *Klebsiella*-induced infections in domestic species: a case-series study in 697 animals (1997–2019). *Braz J Microbiol* 53:455–464
5. Twenhafel NA, Whitehouse CA, Stevens EL, Hottel HE, Foster CD, Gamble S, Abbott S, Janda JM, Kreiselmeier N, Steele KE (2008) Multisystemic abscesses in African green monkeys (*Chlorocebus aethiops*) with invasive *Klebsiella pneumoniae*—identification of the hypermucoviscosity phenotype. *Vet Pathol* 45:226–231
6. Williamson S (2017) *Klebsiella pneumoniae* septicemia in preweaned pigs. *Vet Rec* 180:443
7. Hertl JA, Schukken YH, Welcome FL, Tauer LW, Gröhn YT (2014) Pathogen-specific effects on milk yield in repeated clinical mastitis episodes in *Holstein* dairy cows. *J Dairy Sci* 97:1465–1480
8. Hu Y, Anes J, Devineau S, Fanning S (2021) *Klebsiella pneumoniae*: prevalence, reservoirs, antimicrobial resistance, pathogenicity, and infection: a hitherto unrecognized zoonotic bacterium. *Foodborne Pathog Dis* 18:63–84
9. Huynh BT, Passet V, Rakotondrasoa A, Diallo T, Kerleguer A, Hennart M, Lauzanne A, Herindrainy P, Seck A, Bercion R, Borand L, de la Pardos M, Delarocque-Astagneau E, Guillemot D, Vray M, Garin B, Collard JM, Rodrigues C, Brisse S (2020) *Klebsiella pneumoniae* carriage in low-income countries: antimicrobial resistance, genomic diversity and risk factors. *Gut Microbes* 11:1287–1299
10. Rodrigues C, Hauser K, Cahill N, Ligowska-Marzeta M, Centorotola G, Cornacchia A, Garcia Fierro R, Haenni M, Nielsen EM, Piveteau P, Barbier E, Morris D, Pomilio F, Brisse S (2022) High prevalence of *Klebsiella pneumoniae* in European food products: a multicentric study comparing culture and molecular detection methods. *Microbiol Spectr* 10:e0237621
11. Thorpe H, Booton R, Kallonen T, Gibbon MJ, Couto N, Passet V, Fernandez JSL, Rodrigues C, Matthews L, Mitchell S, Reeve R, David S, Merla C, Corbella M, Ferrari C, Comandatore F, Marone P, Brisse S, Sasser D, Corander J, Feil EJ (2021) One Health or Three? Transmission modelling of *Klebsiella* isolates reveals ecological barriers to transmission between humans, animals and the environment. *BioRxiv* 8:455249
12. Wareth G, Neubauer H (2021) The Animal-foods-environment interface of *Klebsiella pneumoniae* in Germany: an observational study on pathogenicity, resistance development and the current situation. *Vet Res* 52:16
13. Carvalho I, Alonso CA, Silva V, Pimenta P, Cunha R, Martins C, Igrejas G, Torres C, Poeta P (2020) Extended-spectrum beta-lactamase-producing *Klebsiella pneumoniae* isolated from healthy and sick dogs in Portugal. *Microb Drug Resist* 26:709–715
14. Guerra B, Fischer J, Helmuth R (2014) An emerging public health problem: acquired carbapenemase-producing microorganisms are present in food-producing animals, their environment, companion animals and wild birds. *Vet Microbiol* 171:290–297
15. Harada K, Shimizu T, Mukai Y, Kuwajima K, Sato T, Usui M, Tamura Y, Kimura Y, Miyamoto T, Tsuyuki Y, Ohki A, Kataoka Y (2016) Phenotypic and molecular characterization of antimicrobial resistance in *Klebsiella* spp. isolates from companion animals in Japan: clonal dissemination of multidrug-resistant extended-spectrum  $\beta$ -lactamase-producing *Klebsiella pneumoniae*. *Front Microbiol* 7:1021
16. Ahmad TA, El-Sayed LH, Haroun M, El Hussein AA, El Ashry SH (2012) Development of immunization trials against *Klebsiella pneumoniae*. *Vaccine* 30:2411–2420
17. Assoni L, Girardello R, Converso TR, Darrieux M (2021) Current stage in the development of *Klebsiella pneumoniae* vaccines. *Infect Dis Ther* 10:2157–2175
18. Babu L, Uppalapati SR, Sripathy MH, Reddy PN (2017) Evaluation of recombinant multi-epitope outer membrane protein-based *Klebsiella pneumoniae* subunit vaccine in mouse model. *Front Microbiol* 8:1805
19. Gordon PJ, Kleinhenz MD, Ydstie JA, Brick TA, Slinden LM, Peterson MP, Straub DE, Burkhardt DT (2018) Efficacy of vaccination with a *Klebsiella pneumoniae* siderophore receptor protein vaccine for reduction of *Klebsiella mastitis* in lactating cattle. *J Dairy Sci* 101:10398–10408
20. Hussein KE, Bahey-El-Din M, Sheweita SA (2018) Immunization with the outer membrane proteins OmpK17 and OmpK36 elicits protection against *Klebsiella pneumoniae* in the murine infection model. *Microb Pathog* 119:12–18
21. Lee WH, Choi HI, Hong SW, Kim KS, Cho YS, Jeon SG (2015) Vaccination with *Klebsiella pneumoniae*-derived extracellular vesicles protects against bacteria-induced lethality via both humoral and cellular immunity. *Exp Mol Med* 47:e183
22. Achkar JM (2019) Prospects and challenges of a new live *tuberculosis* vaccine. *Lancet Respir Med* 7:723–725
23. Demeure CE, Derbise A, Guillas C, Gerke C, Cauchemez S, Carniel E, Pizarro-Cerdá J (2019) Humoral and cellular immune correlates of protection against bubonic plague by a live *Yersinia pseudotuberculosis* vaccine. *Vaccine* 37:123–129
24. Derbise A, Guillas C, Gerke C, Carniel E, Pizarro-Cerdá J, Demeure CE (2020) Subcutaneous vaccination with a live attenuated *Yersinia pseudotuberculosis* plague vaccine. *Vaccine* 38:1888–1892
25. Lalvani A, Sridhar S (2010) BCG vaccination: 90 years on and still so much to learn. *Thorax* 65:1036–1038
26. Pandey A, Cabello A, Akoolo L, Rice-Ficht A, Arenas-Gamboa A, McMurray D, Ficht TA, de Figueiredo P (2016) The case for live attenuated vaccines against the neglected zoonotic diseases *Brucellosis* and *Bovine Tuberculosis*. *PLoS Negl Trop Dis* 10:e0004572
27. Hsieh PF, Lin TL, Lee CZ, Tsai SF, Wang JT (2008) Serum-induced iron-acquisition systems and TonB contribute to virulence in *Klebsiella pneumoniae* causing primary pyogenic liver abscess. *J Infect Dis* 197:1717–1727
28. Xu L, Wang M, Yuan J, Wang H, Li M, Zhang F, Tian Y, Yang J, Wang J, Li B (2021) The KbvR regulator contributes to capsule production, outer membrane protein biosynthesis, antiphagocytosis, and virulence in *Klebsiella pneumoniae*. *Infect Immun* 89:e00016–21
29. Asadi Karam MR, Oloomi M, Mahdavi M, Habibi M, Bouzari S (2013) Vaccination with recombinant FimH fused with flagellin enhances cellular and humoral immunity against urinary tract infection in mice. *Vaccine* 31:1210–1216
30. Ramezanalizadeh F, Owlia P, Rasooli I (2020) Type I pili, CsuA/B and FimA induce a protective immune response against *Acinetobacter baumannii*. *Vaccine* 38:5436–5446
31. Rostamian M, Farasat A, Chegene Lorestani R, Nemati Zargaran F, Ghadiri K, Akya A (2022) Immunoinformatics and molecular dynamics studies to predict T-cell-specific epitopes of four *Klebsiella pneumoniae* fimbriae antigens. *J Biomol Struct Dyn* 40:166–176
32. Zargaran FN, Akya A, Rezaeian S, Ghadiri K, Lorestani RC, Madanchi H, Safaei S, Rostamian M (2021) B cell epitopes of four fimbriae antigens of

*Klebsiella pneumoniae*: a comprehensive in silico study for vaccine development. *Int J Pept Res Ther* 27:875–886

33. Blumer C, Kleefeld A, Lehnen D, Heintz M, Dobrindt U, Nagy G, Michaelis K, Emödy L, Polen T, Rachel R, Wendisch VF, Uden G (2005) Regulation of type 1 fimbriae synthesis and biofilm formation by the transcriptional regulator LrhA of *Escherichia coli*. *Microbiology* 151:3287–3298
34. Kim KW, Jung WK, Park YH (2008) Comparison of pre-stain suspension liquids in the contrasting ability of neutralized potassium phosphotungstate for negative staining of bacteria. *J Microbiol Biotechnol* 18:1762–1767
35. Zhao X, Zeng X, Dai Q, Hou Y, Zhu D, Wang M, Jia R, Chen S, Liu M, Yang Q, Wu Y, Zhang S, Huang J, Ou X, Mao S, Gao Q, Zhang L, Liu Y, Yu Y, Cheng A (2021) Immunogenicity and protection efficacy of a *Salmonella enterica* serovar Typhimurium *fnr*, *arcA* and *fliC* mutant. *Vaccine*. 39:588–595
36. Kobayashi SD, Porter AR, Freedman B, Pandey R, Chen L, Kreiswirth BN, DeLeo FR (2018) Antibody-mediated killing of carbapenem-resistant ST258 *Klebsiella pneumoniae* by human neutrophils. *mBio* 9:e00297–e00218
37. Hu G, Chen X, Chu W, Ma Z, Miao Y, Luo X, Fu Y (2022) Immunogenic characteristics of the outer membrane phosphoprotein as a vaccine candidate against *Klebsiella pneumoniae*. *Vet Res* 53:5
38. Cheng F, Li Z, Lan S, Liu W, Li X, Zhou Z, Song Z, Wu J, Zhang M, Shan W (2018) Characterization of *Klebsiella pneumoniae* associated with cattle infections in southwest China using multi-locus sequence typing (MLST), antibiotic resistance and virulence-associated gene profile analysis. *Braz J Microbiol* 49:93–100
39. Frey J (2007) Biological safety concepts of genetically modified live bacterial vaccines. *Vaccine* 25:5598–5605
40. Fan Q, Sims T, Sojar H, Genco R, Page RC (2001) Fimbriae of *Porphyromonas gingivalis* induce opsonic antibodies that significantly enhance phagocytosis and killing by human polymorphonuclear leukocytes. *Oral Microbiol Immunol* 16:144–152
41. Starks CM, Miller MM, Broglie PM, Cubbison J, Martin SM, Eldridge GR (2021) Optimization and qualification of an assay that demonstrates that a FimH vaccine induces functional antibody responses in women with histories of urinary tract infections. *Hum Vaccin Immunother* 17:283–292
42. Thankavel K, Madison B, Ikeda T, Malaviya R, Shah AH, Arumugam PM, Abraham SN (1997) Localization of a domain in the FimH adhesin of *Escherichia coli* type 1 fimbriae capable of receptor recognition and use of a domain-specific antibody to confer protection against experimental urinary tract infection. *J Clin Invest* 100:1123–1136
43. Liu ZF, Chen JL, Li WY, Fan MW, Li YH (2019) FimH as a mucosal adjuvant enhances persistent antibody response and protective efficacy of the anti-caries vaccine. *Arch Oral Biol* 101:122–129
44. Witkowska D, Mieszala M, Gamian A, Staniszewska M, Czarny A, Przondo-Mordarska A, Jaquinod M, Forest E (2005) Major structural proteins of type 1 and type 3 *Klebsiella fimbriae* are effective protein carriers and immunogens in conjugates as revealed from their immunochemical characterization. *FEMS Immunol Med Microbiol* 45:221–230
45. Li B, Zhao Y, Liu C, Chen Z, Zhou D (2014) Molecular pathogenesis of *Klebsiella pneumoniae*. *Future Microbiol* 9:1071–1081
46. Banerjee K, Motley MP, Diago-Navarro E, Fries BC (2021) Serum antibody responses against carbapenem-resistant *Klebsiella pneumoniae* in infected patients. *mSphere* 6:e1335–e1320
47. Yeh FC, Yeh KM, Siu LK, Fung CP, Yang YS, Lin JC, Chang FY (2012) Increasing opsonizing and killing effect of serum from patients with recurrent K1 *Klebsiella pneumoniae* liver abscess. *J Microbiol Immunol Infect* 45:141–146

## Publisher's Note

Springer Nature remains neutral with regard to jurisdictional claims in published maps and institutional affiliations.

Ready to submit your research? Choose BMC and benefit from:

- fast, convenient online submission
- thorough peer review by experienced researchers in your field
- rapid publication on acceptance
- support for research data, including large and complex data types
- gold Open Access which fosters wider collaboration and increased citations
- maximum visibility for your research: over 100M website views per year

At BMC, research is always in progress.

Learn more [biomedcentral.com/submissions](https://biomedcentral.com/submissions)

