

RESEARCH ARTICLE

Open Access



# Degeneration of saccular hair cells caused by MITF gene mutation

Yi Du<sup>†</sup>, Li-li Ren<sup>†</sup>, Qing-qing Jiang<sup>†</sup>, Xing-jian Liu, Fei Ji, Yue Zhang, Shuo-long Yuan, Zi-Ming Wu<sup>\*</sup>, Wei-Wei Guo<sup>\*</sup> and Shi-Ming Yang<sup>\*</sup>

## Abstract

**Background:** Waardenburg syndrome (WS) is the consequence of an inherited autosomal dominant mutation which causes the early degeneration of intermediate cells of cochlear stria vascularis (SV) and profound hearing loss. Patients with WS may also experience primary vestibular symptoms. Most of the current WS studies did not discuss the relationship between WS and abnormal vestibular function. Our study found that a spontaneous mutant pig showed profound hearing loss and depigmentation. MITF-M, a common gene mutation causes type WS which affect the development of the intermediate cell of SV, was then identified for animal modeling.

**Results:** In this study, the degeneration of vestibular hair cells was found in pigs with MITF-M. The morphology of hair cells in vestibular organs of pigs was examined using electron microscopy from embryonic day E70 to postnatal two weeks. Significant hair cell loss in the mutant saccule was found in this study through E95 to P14. Conversely, there was no hair cell loss in either utricle or semi-circular canals.

**Conclusions:** Our study suggested that MITF-M gene mutation only affects hair cells of the saccule, but has no effect on other vestibular organs. The study also indicated that the survival of cochlear and saccular hair cells was dependent on the potassium release from the cochlear SV, but hair cells of the utricle and semi-circular canals were independent on SV.

**Keywords:** *MITF-M*, Cochleosaccular degeneration, Hearing loss, Waardenburg syndrome, Intermediate cell, Pig

## Background

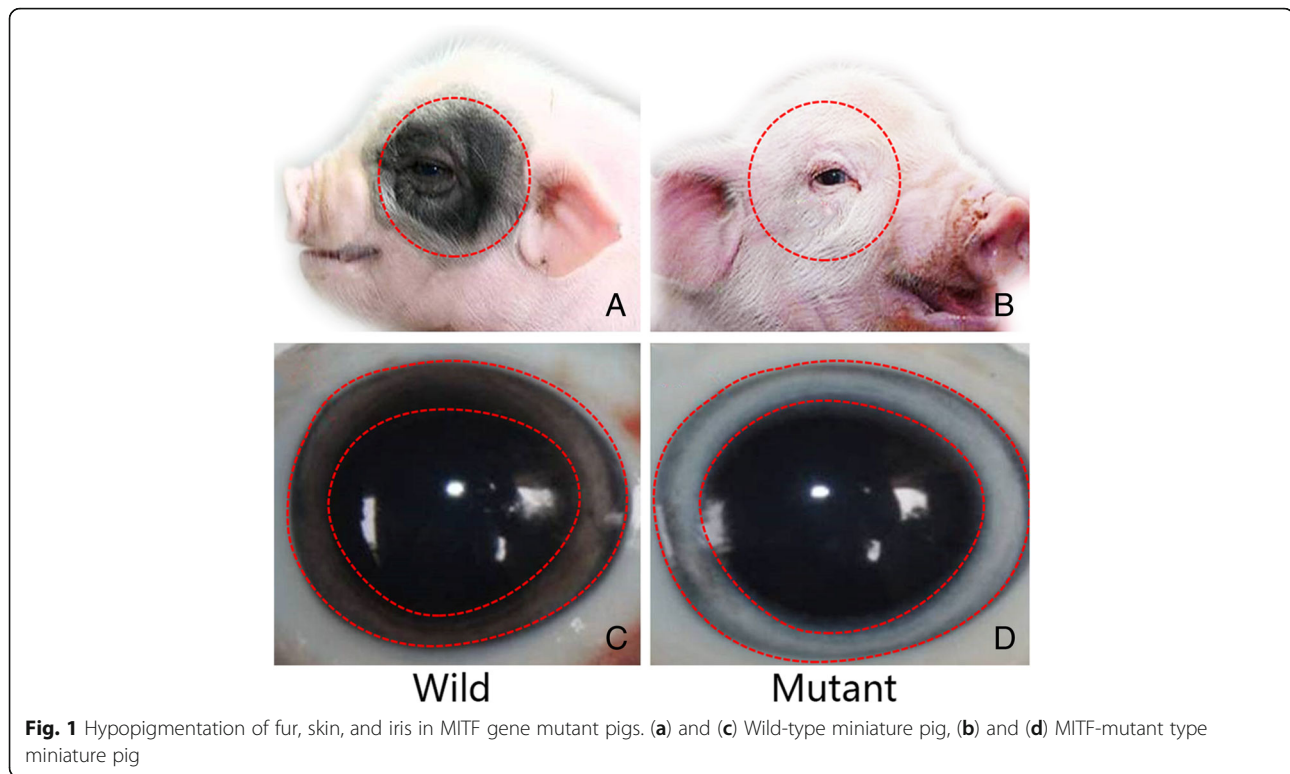
The balance system mainly relies on vestibular organs which provides an internal reference of our positions [1]. Hair cells are the only sensory cells in vestibular organs which can detect linear or rotational head movement. It is crucial to notice that in mammals vestibular organs are formed during embryonic development and the damage of hair cell in those organs is irreversible [2, 3]. Vestibular hair cells loss caused by aging, genetic defects, or ototoxic drugs, can lead to significant balance disorders [4]. Impaired vestibular function is embodied in anomalous oculomotor, gazing, and postural responses during movements [1].

Animal models are important tools to study the mechanisms of vestibular hair cell degeneration and to evaluate their influence on vestibular function. Rongchang pig, known as “panda-pig,” is characterized by their black ring around their eyes. Our previous work reported a phenotype of miniature pigs with deafness and depigmentation which was caused by a mutation in the region of the melanocyte-specific promoter of microphthalmia-associated transcription factor (MITF) gene [5]. This expression of MITF-M isoform resembled the typical phenotype of Waardenburg syndrome type II (WS2) in humans, which was featured by severe hearing loss, heterochromia iridis and white forelocks [6, 7]. In this study, we depicted the same porcine model which exhibits WS2-like phenotypes, including depigmentation in the skin, fur, and iridis, spontaneous deafness as well as saccular hypofunction (Fig. 1). Studies related to cochleosaccular degeneration discussed its influence in a variety of animal models (mouse [8], cats [9], dogs [10, 11], mink [12]) and human [13].

\* Correspondence: [zimingwu@126.com](mailto:zimingwu@126.com); [gwent001@163.com](mailto:gwent001@163.com); [shm\\_yang@163.com](mailto:shm_yang@163.com)

<sup>†</sup>Yi Du, Li-li Ren and Qing-qing Jiang contributed equally to this work. Beijing Key Laboratory of Hearing Impairment Prevention and Treatment, Key Laboratory of Hearing Impairment Science, Chinese PLA Medical School, Beijing, China





Previous studies reported balance problems in patients diagnosed with WS. Marcus et al. studied vestibular testing results of twenty-two WS patients and summarized a common disturbed vestibular function [14]. Other studies by Black [15], Zelig [16], Stoller [17], Hagemen and Delleman [7], and Hildesheimer [18], also discovered abnormalities of vestibular function in WS patients. However, Hageman studied 25 WS patients noticing no apparent difference with other congenital hearing loss subjects. Besides, Hageman suggested that vestibular dysfunction should not be considered as an essential symptom in WS [7]. Thorkilgaard et al. also reported normal vestibular functions in WS patients [19]. Therefore it is still unclear whether the abnormal vestibular function should be considered as one of the characteristic features in WS patients.

Few studies have tested the effect of MITF-M gene mutation, a known gene mutation which causes WS, on vestibular function. Hence, in this study, we evaluated the morphological features of vestibular organs in MITF-M mutation animals.

## Results

### Morphological performance in MITF-mutation pig and wild type pig

#### Micro-CT scanning and 3D reconstruction

Micro-CT scanning of both the WT and albino pigs were performed. After comparing the CT images, no

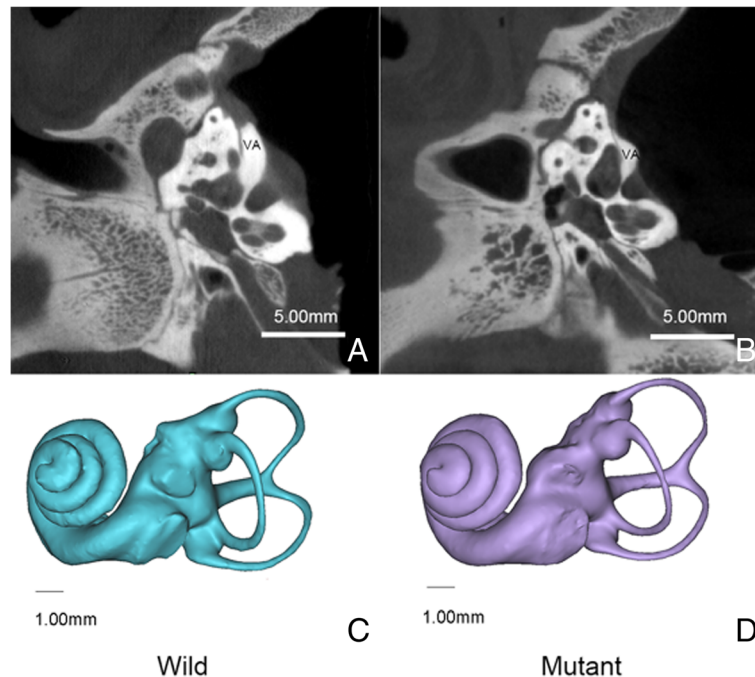
significant difference was observed between the WT and albino pigs. Labyrinth in all five vestibular organs showed no dysplasia, neither did the vestibular aqueduct, especially no dilation (Fig. 2a and b).

Based on the reconstructed 3D models of inner ears, whole spatial structures of the cochlea, vestibule, and semicircular canals were found in the WT and albino pigs (Fig. 2c and d). The morphological comparison between the WT and albino pigs showed no prominent dissimilarity. The three semicircular canals were placed in orthogonal positions and formed approximately 90 degrees between each other.

#### SEM results of vestibular systems

The comparison of saccular hair cells in the WT and albino pigs was well described in Fig. 3. Saccular hair cells in the WT miniature pigs were well developed and all countable (Fig. 3a (1–2), otoconia was removed for a better view). By contrast, marked hair cell loss was found in albino pig (Fig. 3b (1–2)). The otoconia were absent, and the stereocilia appeared sparse and atypical, even barely existed in the mutant saccule. These results of SEM suggested extensive hair cell loss in saccule was associated with MITF-M gene mutation.

A thick layer of otoconia covered the utricle epithelial surface of both WT and albino pigs. (Fig. 4, otoconia

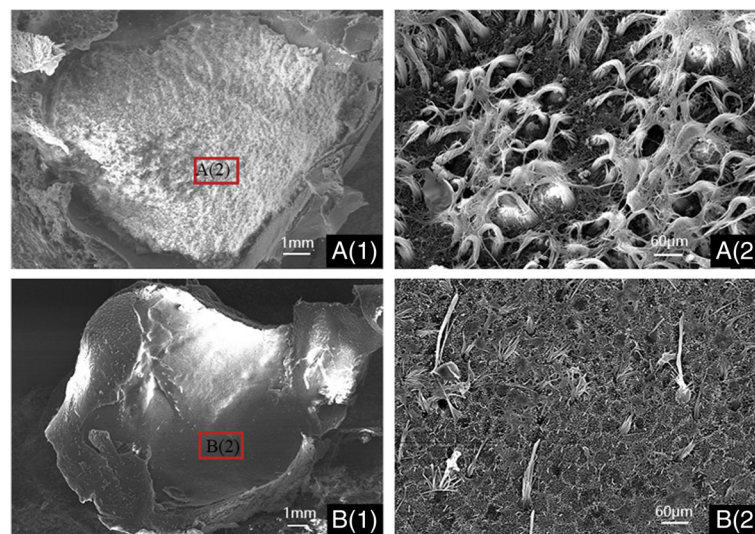


**Fig. 2** **a** and **b**: CT scans showed that the vestibular bony labyrinth. No difference was found between the WT (**a**) and albino pigs (**b**) (VA: vestibular aqueduct). **c** and **d**: Reconstructed left bony labyrinths of miniature pigs (**a**: wild miniature pig; **b**: MIFT mutation miniature pig). Scale bars in **a** & **b** = 5 mm, in **c** & **d** = 1 mm

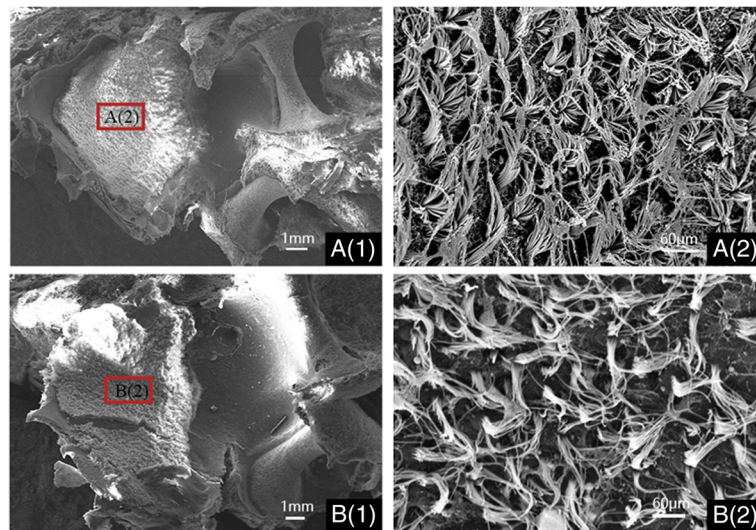
was removed for a better view) No significant decrease of otoconia in utricle of the albino pig was observed compared with the WT pig.

Hair cells in the crista ampulla of horizontal canals in both the WT and albino pigs were shown in Fig. 5. No

obvious pathology in hair cells was observed in the crista ampulla between the WT and mutant pigs. There was no difference in hair cell density of crista ampullas, which suggested MIFT-M mutation did not affect hair cells in ampulla.



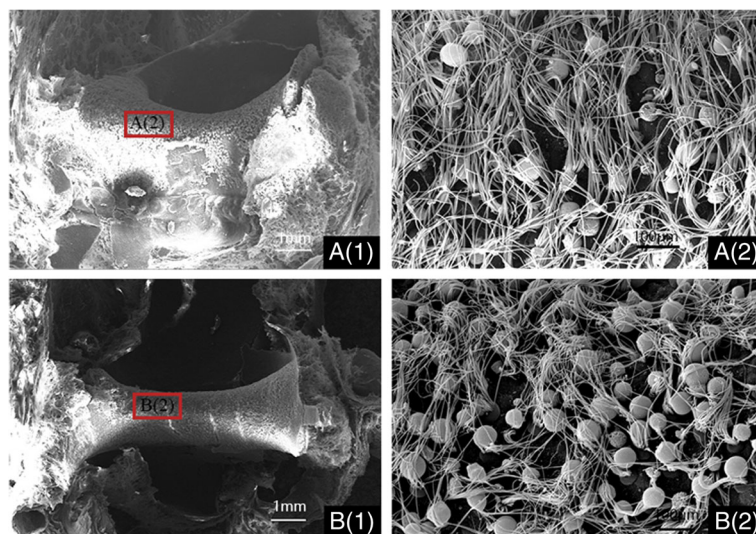
**Fig. 3** MIFT-M mutation leads to the loss of saccular hair cells in miniature pigs (postnatal 14 days). **a** (1) Low magnification image of the saccule from wild miniature pig with numerous hair cells throughout the sensory epithelium; **a** (2) high magnification image of the saccular region from wild miniature pig (otoconia was removed for a better view); **b** (1): low magnification image of the saccule from MIFT-mutation porcine model with extensive hair cell loss throughout the sensory epithelium; **b** (2): high magnification image of the saccular region from MIFT-mutation porcine model. Scale bars in **a** (1) & **b** (1) = 1 mm, in **a** (2) & **b** (2) = 60 µm



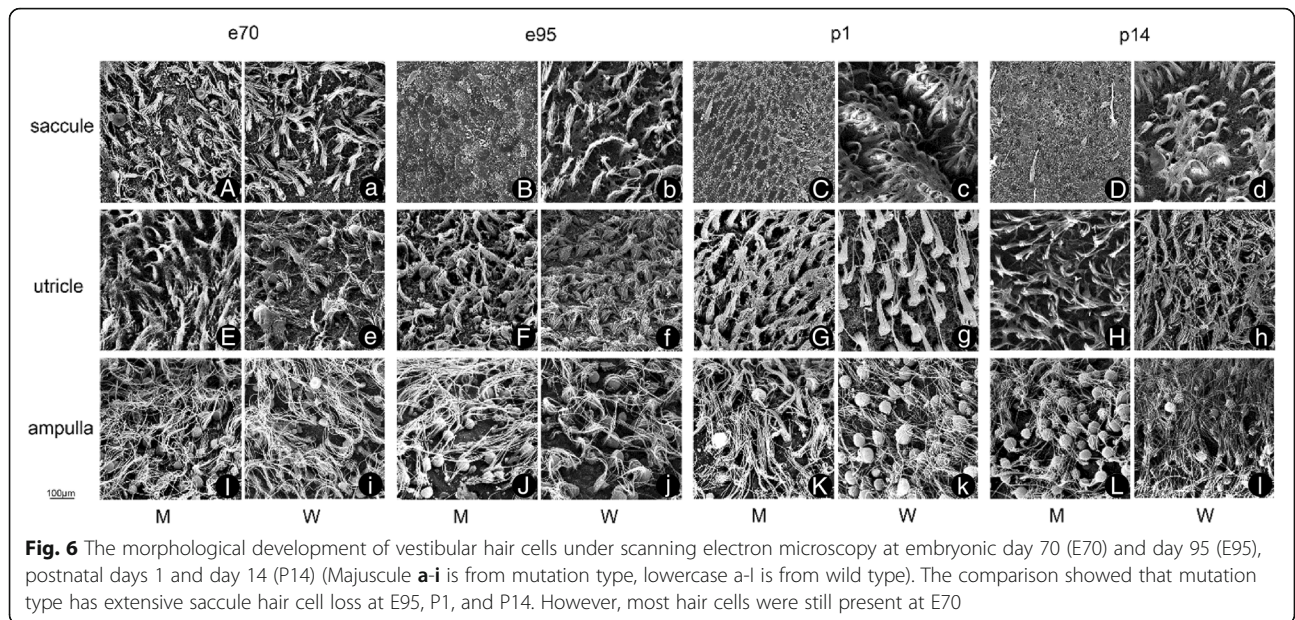
**Fig. 4** Scanning electron micrographs of utricles of postnatal 14 days old miniature pigs (otoconia was removed for a better view). **a** (1): low magnification image of the utricle from wild miniature pig with numerous hair cells throughout the sensory epithelium; **a** (2): high magnification image of the utricle region from wild miniature pig; **b** (1): low magnification image of the utricle from MITF-mutation porcine model with numerous hair cells throughout the sensory epithelium; **b** (2): high magnification image of the utricle region from MITF-mutation porcine model. Scale bars = 1 mm in **a** (1) & **b** (1). Scale bars = 60 μm in **a** (2) & **b** (2)

Severe collapsed saccular hair cells in MITF-M mutation model was observed on postnatal 14 days. To investigate whether this degeneration was inherent, we checked four critical developmental time points, i.e., E70, E95, P1 and P14 (Fig. 6). Similar to P14, widespread vestibular hair cell loss was also noticeable in E95 and

P1 compared to wild type. However, the saccular hair cells at E70 were intact and countable. This result indicated that hair cell damage happened in the process of cellular development. No hair cell damage was observed in the utricle and semicircular canal during the whole developmental period (E70 to P14).



**Fig. 5** Scanning electron micrographs of the horizontal crista ampullas in postnatal 14 days miniature pigs. **a** (1): low magnification image of the crista from wild miniature pig with numerous hair cells throughout the sensory epithelium; **a** (2): high magnification image of the central apical region from wild miniature pig; **b** (1): low magnification image of the crista from MITF-mutation porcine model with numerous hair cells throughout the sensory epithelium; **b** (2): high magnification image of the central apical region from MITF-mutation porcine model. Scale bars = 1 mm in **a** (1) & **b** (1) and, 100 μm in **a** (2) & **b** (2)

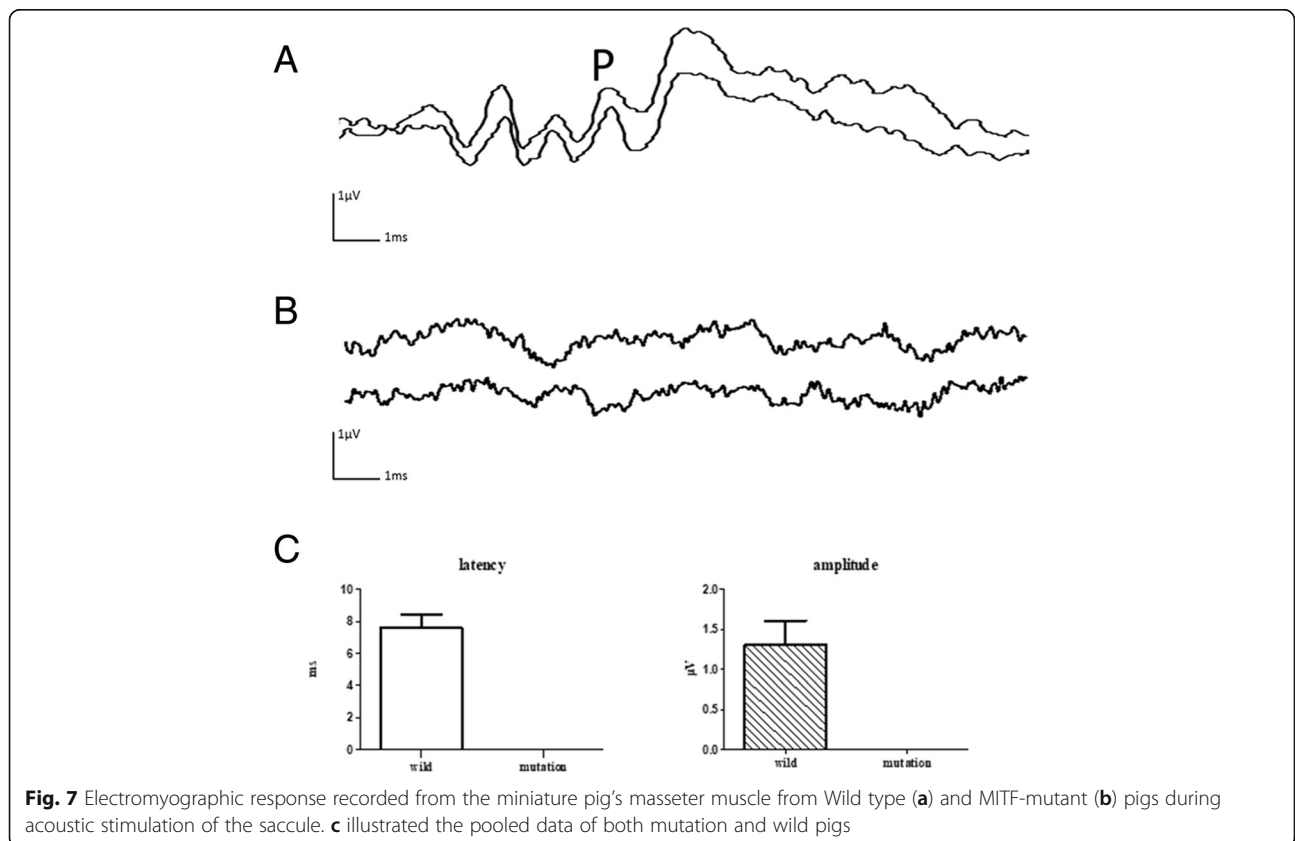


**The vestibular function of miniature pigs**

**VEMP result**

In the WT miniature pig, the latency of wave P of VEMPs recorded from the masseter muscles was  $7.60 \pm 0.78$  ms, with an average amplitude of  $1.31 \pm$

$0.28 \mu\text{V}$ . The reduction rate of the VEMP amplitude was 100, 75 and 100% at 100, 90, and 80 dB SPL, respectively. However, mutant pig showed absent evoked potentials. The threshold of VEMP was 80 dB SPL (Fig. 7).



### Locomotion result

Before gentamicin treatment, WT miniature pig showed normal balance behavior with no tilt and no body sway. After unilateral injection of gentamicin into the left middle ear, pig started to show tilt motion toward the left side (damaged side) and engendered a circling trajectory. This scenario may be the result of vestibular hair cell damage after exposure to gentamicin [22] which caused vertigo. Albino pig after gentamicin treatment showed a similar vertigo behavior and trajectory during locomotion. Injection of gentamicin into left ear caused anti-clockwise sway. This test suggested that the surviving ampulla hair cells in albino pig were functional.

### Discussion

We reported a spontaneous hearing loss model found in pigs. The mutation was found in a non-regulatory region of the melanocyte-specific promoter of microphthalmia-associated transcription factor gene (*Mitf*). It caused early degeneration of intermediate cells of cochlear SV and a profound hearing loss [5]. In this paper, we studied the effect of *MITF-M* gene mutation on vestibular development. We detected substantial damage of saccular hair cells in *MITF-M* mutation pigs under SEM micrograph. Consistently, no VEMP response was discovered in the porcine model, suggesting impaired function of saccule. Interestingly, the saccular hair cell loss was still present at the age of E70, suggesting this hair cell damage was not inherent, but caused during development. *MITF-M* gene mutation did not affect hair cells in the utricle or semi-circular canals or bony labyrinth.

### *MITF* gene played a vital role in WS2 mammals, including humans [5]

Our findings were consistent with this result which suggesting WS not only caused hearing loss but also affected vestibular organs. Using this porcine mutation model, our research provided strong evidence that *MITF-M* gene mutation could cause WS and impair the development of saccule, without interfering utricle or semicircular canals. To verify the appearance of *MITF-M* gene mutation in vestibular organs, we used SEM micrograph in 3 weeks mice to demonstrate various development. Similar severe hair cell loss was evident in saccule in *MITF* mouse (Fig. 8).

Stria vascularis (SV) and vestibular dark cells are engaged in inner ear fluid production [23], whose homeostasis is essential for normal function of hearing and balance. Why is saccule the only affected component in the vestibular system? As is well known, the high concentration of potassium in the cochlear part is maintained by the marginal cells of the SV. SV is also responsible for generating endocochlear potential (EP), the driving force for hair cells to transduce mechanical

stimuli into electrical signals [24]. Recent studies showed that the  $K^+$  channels and intermediate cells were vital in EP and  $K^+$  transport [25, 26]. Our previous research indicated that the lack of intermediate cells was notable in the SV of albino pigs [5], which would influence endolymphatic potential [23]. The reduction of  $K^+$  influx into endolymph caused the decline of resting membrane potential, which would lead to  $Ca^{2+}$  leaking in, resulting in the depolarization of the hair cells, and eventually would trigger  $Ca^{2+}$  – mediated apoptosis [24]. Potassium circulation in the vestibular system (dark cells section) involved the same process as cochlea except the fact that intermediate cells formerly did not exist in vestibular endorgans [23]. Our results suggested the survival of cochlear hair cells and saccular hair cells was dependent on the potassium release from the cochlear SV, but hair cells of the utricle and semi-circular canals were independent on the SV. It should be noted that cochlear and vestibular labyrinths may have independent systems of endolymph secretion [27]. Neither dark cells nor marginal cells existed in the saccular wall, and the source of high potassium was usually considered to be the cochlea through the ductus reuniens [28]. Dark cells were found in all vestibular endorgans except saccule, which was consistent in guinea pig, bat, opossum, cat, Rhesus monkey and man [27].

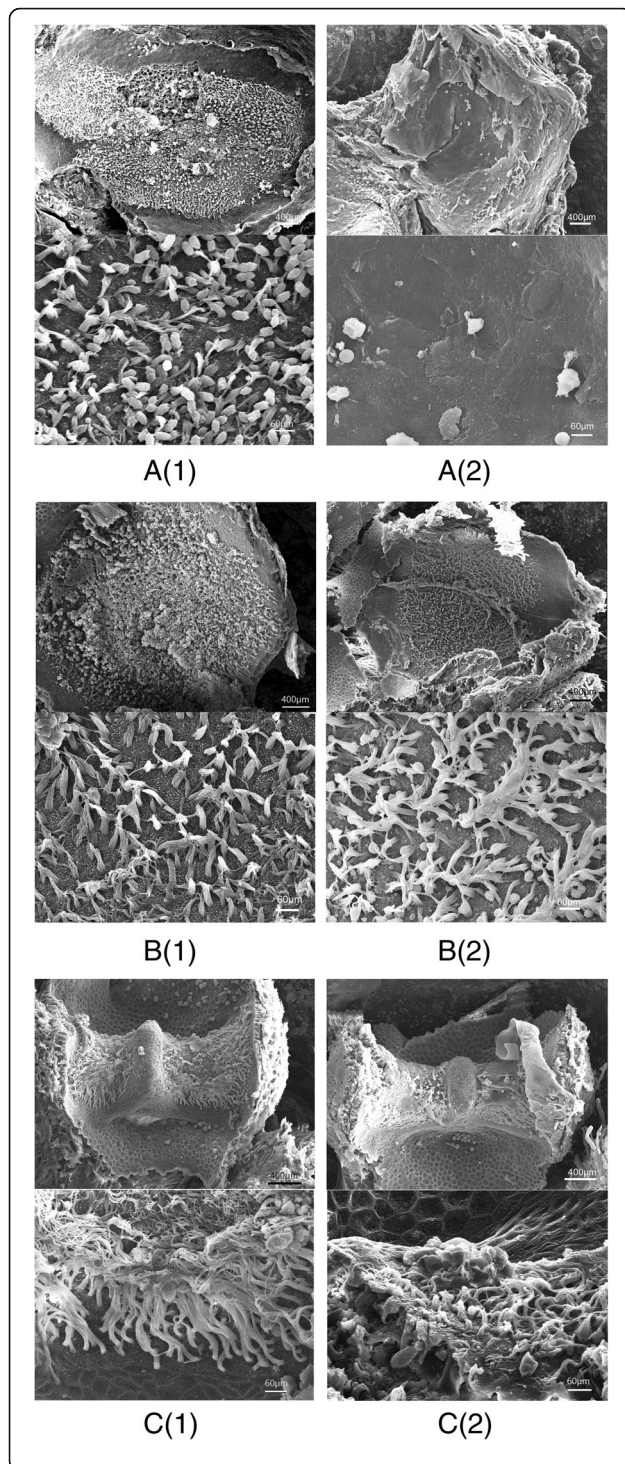
Our animal model also has potential values in studying the role of otolith in the detection and transduction of head-directional signals. Saccule damage may affect compensatory movements in the neck and the limbs because targets of the saccular nerve activation were the neck, forelimb, back muscle and cervical inter motoneurons [29]. Moreover, vestibular stimulation modulated the formation of the hippocampus by diminishing the activity of head-direction cells and place cells [30]. The absence of such stimulation may result in spatial memory deficits [31] and selective atrophy of the hippocampus [32, 33].

As SEM provides a relevant “surface” view of the sensory epithelia [34, 35], vestibular nerves, whose function and integrity were meaningful and noteworthy, should be further investigated in our further research. With the concern of only 3% of the saccular-activated neurons had direct ascending branches to the oculomotor nucleus [29], the VOR analysis which was not included in this article should also be discussed after that.

### Methods

#### Animals

Chinese Rongchang pigs were aging between embryonic day 47 to postnatal two months, from the animal breeding facility of Chongqing Academy of Animal Science, were used in this study. Adult pigs (P-6 m) were chosen to conduct the vestibular function test. Albino pigs with



**Fig. 8** Scanning electron micrographs of saccule, utricle and crista ampulla in postnatal three weeks mice. **a** (1): saccule image from wild mouse (upper: low magnification image; below: high magnification image); **a** (2): saccule image from MITF mouse with extensive hair cell loss throughout the sensory epithelium (upper: low magnification image; below: high magnification image); **b** (1): utricle image from wild mouse (upper: low magnification image; below: high magnification image); **b** (2): utricle image from MITF mouse with numerous hair cells throughout the sensory epithelium (upper: low magnification image; below: high magnification image); **c** (1): crista ampulla image from wild mouse (upper: low magnification image; below: high magnification image); **c** (2): crista ampulla image from MITF mouse with numerous hair cells throughout the sensory epithelium (upper: low magnification image; below: high magnification image). Scale bars = 400 μm in upper images, 60 μm in below images

MITF-M mutation were characterized by missing their black ring around eyes (Fig. 1b) and heterochromia irides (Fig. 1d). Normal Rongchang pigs were used as the control group (Fig. 1a). The study was conducted with the approval of the Institutional Animal Care and Use Committee of General Hospital of PLA.

#### Vestibular function test

##### *Otolith function test*

Vestibular evoked myogenic potentials (VEMPs), commonly used to objectively evaluate the saccular function of both human and animals, were recorded in two 0.5-year-old miniature pigs (one WT and one albino pig) [20]. The gait, head swings, trunk twisting, and circling were observed in both the WT and mutate pigs to detect vestibular disorders. For the VEMP test, pigs were anesthetized with 3% pentobarbital sodium (1 ml/kg) and Sumianxin II (0.1 ml/kg). As the masseter muscles are easier to be surgically exposed than the neck extensor muscles, we recorded the response of masseter muscles for VEMP test [21]. VEMP response was elicited by open field sound stimuli. The recording electrode was inserted into the lower third masseter muscles, and the reference electrode was inserted in the tip of the nose. The ground electrode was inserted in the scalp of the vertex. A rubber ball was placed between the upper and lower incisors to open the jaw to activate the masseter muscle. The response of VEMPs was evoked by tone-burst at 1 kHz (5 times per second) through ER3A earphone inserted in the auditory canal. The myogenic signal was amplified 100 k with a band-pass filter (30–1000 Hz) and was recorded using Smart-EP software (Intelligent Hearing Systems, Miami, USA). The signal was averaged 128 times with an analysis window of 50 ms. The VEMP was evoked by sound stimulus at 100 dB SPL which decreased at 10 dB step until the waveform disappeared. Two consecutive recordings were collected at threshold levels to verify repeatability and stability. Three more pigs in each group were tested to confirm the results.

### Locomotion test

Effect of intratympanic injection of gentamicin (in one ear) on locomotion was observed in one WT pig and one albino pig. As gentamicin can quickly be diffused into inner ear through the round window membrane, it can diminish peripheral vestibular function. A single intratympanic application of gentamicin could result in a severe reduction in the spontaneous vestibular activity [22] and could lead to abnormal rotational behavior. In our study, the test was performed in a light room where pigs were allowed to roam freely in a 2 m diameter circle. Three more pigs in each group were tested to confirm the results.

### Morphological assessment of vestibular organs

#### Micro-CT scanning and 3D reconstruction

For morphological assessment, animals were sacrificed using an overdose of urethane ( $1.5 \text{ g kg}^{-1}$ ). The left temporal bones of the pigs (wild-type (WT) pigs ( $n = 4$ ) and albino pigs ( $n = 4$ )) were dissected to expose the middle and inner ears. All samples were scanned using a high-speed Micro-CT system (PerkinElmer Inc., Norwalk, CT, USA) with the voxel size of  $39 \mu\text{m}$ . Then MIMICS (Materialises interactive medical image control system, Belgium) was used for 3D image construction.

#### Sample preparation for scanning electron microscopy (SEM)

Pigs at the age of postnatal 14 days (one WT and one albino pig) were chosen to investigate the anatomy of vestibular organ affected by MITF-M mutation. Each pig was sacrificed under general anesthesia by inhalation of ethyl ether. All left inner ears of the samples were fixed with 2.5% glutaraldehyde in 0.1 M sodium cacodylate buffer (pH 7.4) containing 2 mM  $\text{CaCl}_2$ . The samples were then washed with PBS solution and fixed afterward for 15 min in PBS solution which contained 1%  $\text{OsO}_4$ . After dehydration in a serial of graded ethanol (up to 100%), the samples were dried and mounted on aluminum stubs. Then they were sputter-coated with gold particles and examined under the scanning electron microscope (Hitachi S-3700 N, Hitachi, Tokyo, Japan). Three more pigs in each group were tested to confirm the results. All the samples were carefully collected and incinerated after this research.

### Conclusions

In summary, a WS model with collapsed saccular hair cells in miniature pigs was established in this article. This research indicated that the major vestibular performance of this WS model was severe saccule hypofunction (no recordable VEMPs). Hair cells in other vestibular organs, i.e., the utricle and semicircular canals, were well-developed. However, the damage in saccular hair cells was not inherent but caused during the

embryonic stage of development. Given the morphology and clinical performance of saccule detriment, the clinical diagnosis of otolith function should be considered in WS patients. Our results can help to interpret clinical balance disorders in WS patients.

### Abbreviations

CT: Computed Tomography; MITF-M: microphthalmia-associated transcription factor-M

### Acknowledgements

We are grateful for the assistance come from the team of Key Laboratory of Hearing Impairment Science, Chinese PLA Medical School.

### Funding

This work was supported by grants from the National Natural Science Foundation of China (No. 81670940, 81670941, 81570933, and 81400472), Special Cultivating and Developing Program of Beijing Science and Technology Innovation Base (z151100001615050), Health Protection Program of Military (Grant number: 16BJZ18). All the funding programs are related to our vestibular study.

### Availability of data and materials

The datasets analyzed during the current study could be available from the corresponding author on reasonable request.

### Authors' contributions

All authors designed and planned the study. YD, LLR, QQJ, XJL, FJ, YZ, SLY, and ZMW collected the data and were study participants. WWG and SHY prepared the data for publication. YD, WWG, and SHY wrote the paper. All authors read and approved the final manuscript.

### Ethics approval and consent to participate

The study was conducted with permission of the Institutional Animal Care and Use Committee of General Hospital of PLA.

### Consent for publication

Not applicable.

### Competing interests

The authors declare that they have no competing interests.

### Publisher's Note

Springer Nature remains neutral with regard to jurisdictional claims in published maps and institutional affiliations.

Received: 18 September 2018 Accepted: 3 January 2019

Published online: 11 January 2019

### References

- Matsui JI, Ryals BM. Hair cell regeneration: an exciting phenomenon...But will restoring hearing and balance be possible? [J]. *J Rehabil Res Dev*. 2005;42(4 Suppl 2):187–98.
- Ruben RJ. Development of the inner ear of the mouse: a radioautographic study of terminal mitoses [J]. *Acta Otolaryngol*. 1967;220–1.
- Meyers JR, Corwin JT. Morphological Correlates of Regeneration and Repair in the Inner Ear [M]. New York: Springer; 2008. p. 39–75.
- Staecker H, Praetorius M, Baker K, et al. Vestibular hair cell regeneration and restoration of balance function induced by math1 gene transfer [J]. *Otol Neurotol*. 2007;28(2):223–31.
- Chen L, Guo W, Ren L, et al. A de novo silencer causes elimination of MITF-M expression and profound hearing loss in pigs [J]. *BMC Biol*. 2016;14:52.
- Read AP, Newton VE. Waardenburg syndrome [J]. *J Med Genet*. 1997;34(8):656–65.
- Hageman MJ, Oosterveld WJ. Vestibular findings in 25 patients with Waardenburg's syndrome [J]. *Arch Otolaryngol*. 1977;103(11):648–52.
- Rask-Andersen H, Erwall C, Steel KP, et al. The endolymphatic sac in a mouse mutant with cochleo-saccular degeneration : electrophysiological and ultrastructural correlations [J]. *Hear Res*. 1987;26(2):177–90.



9. Chen I, Limb CJ, Ryugo DK. The effect of cochlear-implant-mediated electrical stimulation on spiral ganglion cells in congenitally deaf white cats[J]. *J Assoc Res Otolaryngol*. 2010;11(4):587–603.
10. Anniko M, Fabiansson E, Nilsson O. Deafness in an old English sheepdog. A case report[J]. *Archives of oto-rhino-laryngology*. 1977;218(1–2):1–7.
11. Mair IW. Hereditary deafness in the dalmatian dog[J]. *Arch Otorhinolaryngol*. 1976;212(1):1–14.
12. Sugiura A, Hilding DA. Cochleo-saccular degeneration in Hedlund white mink[J]. *Acta Otolaryngol*. 1970;69(1):126–37.
13. Igarashi M, Macrae D, Ouchi T, et al. Cochleo-saccular degeneration in one of three sisters with hereditary deafness, absent gastric motility, small bowel diverticulitis and progressive sensory neuropathy[J]. *ORL*. 1981;43(1):4–16.
14. Marcus RE. Vestibular function and additional findings in Waardenburg's syndrome[J]. *Acta Otolaryngol*. 1968:221–9.
15. Black FO, Pesznecker SC, Allen K, et al. A vestibular phenotype for Waardenburg syndrome?[J]. *Otol Neurotol*. 2001;22(2):188–94.
16. Zelig S. Syndrome of Waardenburg with deafness[J]. *Laryngoscope*. 1961;71:19–23.
17. Stoller FM. A deafmute with two congenital syndromes[J]. *Arch Otolaryngol*. 1962;76:42–6.
18. Hildesheimer M, Maayan Z, Muchnik C, et al. Auditory and vestibular findings in Waardenburg's type II syndrome[J]. *J Laryngol Otol*. 1989;103(12):1130–3.
19. Thorkilgaard O. Waardenburg's syndrome in father and daughter[J]. *Acta Ophthalmol*. 1962;40:590–9.
20. Basta D, Todt I, Eisenschenk A, et al. Vestibular evoked myogenic potentials induced by intraoperative electrical stimulation of the human inferior vestibular nerve[J]. *Hear Res*. 2005;204(1–2):111–4.
21. Shi X, Zhang Y, Li Y, et al. Vestibular-evoked myogenic potentials in miniature pigs[J]. *J Otology*. 2016;11(2):88–93.
22. Hirvonen TP, Minor LB, Hullar TE, et al. Effects of intratympanic gentamicin on vestibular afferents and hair cells in the chinchilla[J]. *J Neurophysiol*. 2005;93(2):643–55.
23. Ciuman RR. Stria vascularis and vestibular dark cells: characterisation of main structures responsible for inner-ear homeostasis, and their pathophysiological relations[J]. *J Laryngol Otol*. 2009;123(2):151–62.
24. Liu H, Li Y, Chen L, et al. Organ of Corti and Stria Vascularis: is there an interdependence for survival?[J]. *PLoS One*. 2016;11(12):e168953.
25. Kim HJ, Gratton MA, Lee JH, et al. Precise toxicogenic ablation of intermediate cells abolishes the "battery" of the cochlear duct[J]. *J Neurosci*. 2013;33(36):14601–6.
26. Wangemann P. Supporting sensory transduction: cochlear fluid homeostasis and the endocochlear potential[J]. *J Physiol*. 2006;576(Pt 1):11–21.
27. Kimura RS. Distribution, structure, and function of dark cells in the vestibular labyrinth[J]. *Ann Otol Rhinol Laryngol*. 1969;78(3):542–61.
28. Silverstein H, Schuknecht HF. Biochemical studies of inner ear fluid in man. Changes in otosclerosis, Meniere's disease, and acoustic neuroma[J]. *Arch Otolaryngol*. 1966;84(4):395–402.
29. Sato H, Imagawa M, Isu N, et al. Properties of saccular nerve-activated vestibulospinal neurons in cats[J]. *Exp Brain Res*. 1997;116(3):381–8.
30. Taube JS. The head direction signal: origins and sensory-motor integration[J]. *Annu Rev Neurosci*. 2007;30:181–207.
31. Baek JH, Zheng Y, Darlington CL, et al. Evidence that spatial memory deficits following bilateral vestibular deafferentation in rats are probably permanent[J]. *Neurobiol Learn Mem*. 2010;94(3):402–13.
32. Hafting T, Fyhn M, Molden S, et al. Microstructure of a spatial map in the entorhinal cortex[J]. *Nature*. 2005;436(7052):801–6.
33. Jahn K, Wagner J, Deutschlander A, et al. Human hippocampal activation during stance and locomotion: fMRI study on healthy, blind, and vestibular-loss subjects[J]. *Ann N Y Acad Sci*. 2009;1164:229–35.
34. Matsui JI, Haque A, Huss D, et al. Caspase inhibitors promote vestibular hair cell survival and function after aminoglycoside treatment in vivo[J]. *J Neurosci*. 2003;23(14):6111–22.
35. Gale JE, Meyers JR, Periasamy A, et al. Survival of bundleless hair cells and subsequent bundle replacement in the bullfrog's saccule[J]. *J Neurobiol*. 2002;50(2):81–92.

**Ready to submit your research? Choose BMC and benefit from:**

- fast, convenient online submission
- thorough peer review by experienced researchers in your field
- rapid publication on acceptance
- support for research data, including large and complex data types
- gold Open Access which fosters wider collaboration and increased citations
- maximum visibility for your research: over 100M website views per year

**At BMC, research is always in progress.**

Learn more [biomedcentral.com/submissions](https://biomedcentral.com/submissions)

