

RESEARCH

Open Access



Pre-existing cardiovascular disease increases risk of atrial arrhythmia and mortality in cancer patients treated with Ibrutinib

Juan Carlo Avalon¹, Jacob Fuqua¹, Tyler Miller¹, Seth Deskins¹, Chelby Wakefield¹, Austin King¹, Sonya Inderbitzin-Brooks¹, Christopher Bianco², Lauren Veltri³, Wei Fang⁴, Michael Craig³, Abraham Kanate³, Kelly Ross³, Midhun Malla³ and Brijesh Patel^{2*}

Abstract

Background: Ibrutinib is a Bruton's tyrosine kinase inhibitor used in the treatment of hematological malignancies. The most common cardiotoxicity associated with ibrutinib is atrial arrhythmia (atrial fibrillation and flutter). It is known that patients with cardiovascular disease (CVD) are at an increased risk for developing atrial arrhythmia. However, the rate of atrial arrhythmia in patients with pre-existing CVD treated with ibrutinib is unknown.

Objective: This study examined whether patients with pre-existing CVD are at a higher risk for developing atrial arrhythmias compared to those without prior CVD.

Methods: A single-institution retrospective chart review of patients with no prior history of atrial arrhythmia treated with ibrutinib from 2012 to 2020 was performed. Patients were grouped into two cohorts: those with CVD (known history of coronary artery disease, heart failure, pulmonary hypertension, at least moderate valvular heart disease, or device implantation) and those without CVD. The primary outcome was incidence of atrial arrhythmia, and the secondary outcomes were all-cause mortality, risk of bleeding, and discontinuation of ibrutinib. The predictors of atrial arrhythmia (namely atrial fibrillation) were assessed using logistic regression. A Cox-Proportional Hazard model was created for mortality.

Results: Patients were followed for a median of 1.1 years. Among 217 patients treated with ibrutinib, the rate of new-onset atrial arrhythmia was nearly threefold higher in the cohort with CVD compared to the cohort without CVD (17% vs 7%, $p=0.02$). Patients with CVD also demonstrated increased adjusted all-cause mortality (OR 1.9, 95% CI 1.06-3.41, $p=0.01$) and decreased survival probability (43% vs 54%, $p=0.04$) compared to those without CVD over the follow-up period. There were no differences in risk of bleeding or discontinuation between the two cohorts.

Conclusions: Pre-existing cardiovascular disease was associated with significantly higher rates of atrial arrhythmia and mortality in patients with hematological malignancies managed with ibrutinib.

Keywords: Ibrutinib, Atrial fibrillation, Cardio-oncology, Cardiovascular disease, Arrhythmia, Hematologic malignancy

Introduction

Ibrutinib is a Bruton's tyrosine kinase (BTK) inhibitor that is commonly used for the treatment of various hematological malignancies since first approved in November 2013 [1]. Till date, this drug has been approved and indicated for treatment of chronic lymphocytic leukemia

*Correspondence: brijesh.patel@wvmedicine.org

² West Virginia University Heart and Vascular Institute, Morgantown, WV 26506, USA

Full list of author information is available at the end of the article



© The Author(s) 2021. **Open Access** This article is licensed under a Creative Commons Attribution 4.0 International License, which permits use, sharing, adaptation, distribution and reproduction in any medium or format, as long as you give appropriate credit to the original author(s) and the source, provide a link to the Creative Commons licence, and indicate if changes were made. The images or other third party material in this article are included in the article's Creative Commons licence, unless indicated otherwise in a credit line to the material. If material is not included in the article's Creative Commons licence and your intended use is not permitted by statutory regulation or exceeds the permitted use, you will need to obtain permission directly from the copyright holder. To view a copy of this licence, visit <http://creativecommons.org/licenses/by/4.0/>. The Creative Commons Public Domain Dedication waiver (<http://creativecommons.org/publicdomain/zero/1.0/>) applies to the data made available in this article, unless otherwise stated in a credit line to the data.

(CLL)/small lymphocytic lymphoma (SLL), mantle cell lymphoma, marginal zone lymphoma, Waldenstrom macroglobulinemia, and chronic graft versus host disease (GvHD) [1–5].

As with many chemotherapeutic agents, ibrutinib has a well-documented side effect profile including bleeding, infections, cytopenias, hypertension, tumor lysis syndrome, and cardiac arrhythmias [6–12]). Common cardiac arrhythmias that have been associated with ibrutinib include ventricular tachyarrhythmias and, most commonly, atrial fibrillation. Atrial fibrillation has been documented in 4% of patients in clinical trials and 5.77 per 100 person-years while another study has demonstrated an 11% incidence of atrial arrhythmia over a 5-year follow-up [13, 14]. Ibrutinib has an off-target inhibitory effect on Tec protein tyrosine kinase (TEC). Both BTK and TEC are expressed in cardiac tissue with an increased concentration in atrial tissue [15–17].

Development of atrial fibrillation is also associated with multiple modifiable risk factors including obesity, hypertension, diabetes, obstructive sleep apnea, alcohol consumption, smoking, and sedentary lifestyles [18–21]. Additionally, coronary artery disease (CAD) has also been associated with atrial fibrillation, with the prevalence of CAD in patients with atrial fibrillation ranging from 17 to 46.5% [19]. Although some of these risk factors have a more pronounced contribution to the incidence of atrial fibrillation, ibrutinib was shown to increase the incidence of atrial fibrillation independently of these risk factors [22]. Since both cardiovascular disease and the use of ibrutinib are associated with an escalated risk for atrial fibrillation, our study aimed to investigate the incidence of new-onset atrial fibrillation after ibrutinib initiation in patients with underlying cardiovascular disease (CVD).

Methods

Approval and appropriate oversight from the Institutional Board Review was obtained prior to data collection. We retrospectively collected data on consecutive patients who received ibrutinib from November 2012 to September 2020 at a single institution. This study period was chosen because it was the first initiation date of ibrutinib for a patient to the last known follow-up. This study's primary outcome was to assess if prior CVD increased the risk of atrial fibrillation incidence after receiving ibrutinib. The secondary outcomes were all-cause mortality, bleeding, and discontinuation of Ibrutinib. We divided the patients into two cohorts 1) patients with prior cardiovascular disease (CVD) and 2) patients without CVD. Patients with known CAD (with or without revascularization), known chronic heart failure with reduced ejection fraction or chronic heart failure with

preserved ejection fraction, pulmonary hypertension, pacemakers, implantable cardioverter defibrillators, ventricular arrhythmia, or at least moderate valvular heart disease were included in the prior CVD group. Since one of the outcomes of interest was a new diagnosis of atrial fibrillation, we excluded patients with an existing diagnosis of atrial fibrillation before ibrutinib initiation. We excluded patients with missing data for medical history or the ibrutinib initiation date. We also excluded patients who received Ibrutinib for GVHD because their clinical characteristics would be heterogenous than patients with other malignancies. The clinical variables are either self-reported by the patients, documented diagnoses from clinicians, or confirmed through review of relevant cardiac testing including, but not limited to, electrocardiogram (ECG) or echocardiography.

Categorical variables were analyzed with the chi-square test and expressed as percentages. The continuous variables were analyzed with the Mann-Whitney U test after evaluating the normalcy of data (using the Shapiro-Wilk test) and expressed as medians and interquartile range. A binary logistic regression was created to predict CVD as an independent predictor for new-onset atrial fibrillation after adjusting for age, chronic kidney disease, hypertension, and initiation dose of the medications, since these variables are closely linked to the atrial fibrillation and can be disproportionately higher in the CVD group. The finding was reported as an odds ratio with a 95% confidence interval. We also created a Cox proportional hazards model to factor in age, cancer diagnoses, post-chemotherapy, and atrial fibrillation for CVD to predict mortality expressed as hazard ratio with 95% confidence intervals. We selected these variables for this model since they can strongly influence the mortality, especially in the CVD group. The follow-up time for this analysis was calculated from initiation to the last known follow-up date in the chart. The survival probability after checking for assumptions was estimated using the Kaplan-Meier curve and the log-rank test was used to compare the prior CVD and without CVD groups. The statistical analysis was conducted on SPSS (IBM Corp., Amrock, New York) and SAS 9.4 (SAS Institute, Cary, North Carolina).

Results

We identified 300 patients taking ibrutinib from November 2012 to September 2020. Of these, 51 patients had missing data for medical history, 7 patients had GvHD, 18 patients had missing initiation dates, and 7 patients had atrial fibrillation before chemotherapy initiation. After excluding these patients, the final cohort included 217 patients for further analysis. The follow-up time was available for 189 patients (87%), and the median follow-up time was 1.1 years, with an IQR of 0.4 to 2.6 years.

The entire cohort's median age was 74 years (IQR: 64–81 years). Males comprised 64% of the entire cohort and majority of the patients were White (93%). Chronic lymphocytic leukemia (CLL) and small lymphocytic lymphoma (SLL) were the most common forms of cancer (72%), followed by mantle cell lymphoma (16%) and Waldenstrom macroglobulinemia (5%). Marginal zone lymphoma, diffuse large B-cell lymphoma, and other types of hematologic malignancies constituted the remaining 6%.

Baseline characteristics

Prior CVD cohort had 69 patients (32%) and without CVD cohort had 148 patients (68%).

Patients with known CAD (with [12%] or without [6.5%] revascularization), known chronic heart failure with reduced ejection fraction (4.6%) or chronic heart failure with preserved ejection fraction (10.1%), pulmonary hypertension (1%), pacemakers (1.4%), implantable cardioverter defibrillators (0.5%), ventricular arrhythmia (1.8%), or at least moderate valvular heart disease (8.3%) were included in the prior CVD group. The median ages for the prior CVD and without CVD cohorts were 74 and 70 years, respectively ($p=0.02$). There were no statistical differences in gender or race between the two cohorts. The patients with prior CVD had a higher burden of comorbidities such as hypertension, diabetes, dyslipidemia, and chronic obstructive lung disease (Table 1). There was no statistical difference for cerebrovascular events, liver disease, chronic kidney disease, tobacco use, or illicit drug use between the two cohorts. Higher proportions of patients in the prior CVD cohort were on statins, neurohormonal blocking drugs (e.g., beta blockers, angiotensin-converting enzyme inhibitors), and aspirin. However, there was no statistical difference for CYP3A inhibitors or inducers, anticoagulants, or diuretics between the two groups (Table 1).

Outcomes

The primary outcome of interest was new-onset atrial fibrillation. Twelve patients (17.4%) with prior CVD compared to 10 patients (6.8%) without CVD developed atrial fibrillation ($p<0.02$), indicating CVD status was associated with new-onset atrial fibrillation. After adjusting for age, hypertension, chronic kidney disease, and Ibrutinib initiation dose, those with prior CVD have 2.91 times the odds (95% confidence interval: 1.19–7.25; $p=0.02$) of developing atrial fibrillation than those without prior CVD. Secondary outcomes including bleeding (19% with prior CVD vs. 16% without CVD; $p=0.65$) and discontinuation of ibrutinib (44% with prior CVD vs. 31% without CVD; $p=0.08$) were not statistically significant between the two cohorts, indicating CVD status was not significantly associated with either bleeding events

or discontinuation of ibrutinib. However, the mortality rate was significantly higher in patients with prior CVD (39%) vs. without CVD (23%) ($p=0.01$) over the follow-up period (Table 2). After adjusting for the following confounders age, new-onset atrial fibrillation, and cancer diagnoses (CLL/SLL and other cancers combined were treated as two groups), a hazard ratio for mortality with CVD as a predictor was 1.90 (95% confidence interval: 1.06–3.41). The estimated survival probability was 43% with prior CVD and 54% without CVD over the follow-up period (log-rank test $p=0.0484$) (Fig. 1).

Discussion

Given the widespread use of ibrutinib, patients and clinicians must be aware of the cardiotoxic potential. Atrial fibrillation is the most encountered cardiac arrhythmia and contributes to a myriad of complications. Our single-institution study examined the incidence of new-onset atrial arrhythmia in patients with and without pre-existing CVD treated with ibrutinib for various hematologic malignancies, most commonly CLL. Hypertension, diabetes, hyperlipidemia, and COPD were the most significant comorbidities in our cohort of patients with prior CVD and remain amongst the most common causes of major modifiable risk factors for CVD across the general population (Table 1). While the association between ibrutinib use and the development of atrial fibrillation has been previously cited in the literature as high as 6–16% [22–24], our data demonstrated that patients with pre-existing CVD prior to initiation of ibrutinib were nearly three-times more likely to develop atrial fibrillation than those without prior CVD. A previous study demonstrated that an elevated Framingham Heart Study-AF score was associated with increased incidence of atrial fibrillation in those receiving ibrutinib therapy [25]. Survival probability estimates also differed significantly for those patients with a history of CVD versus those without CVD, with an absolute difference of 11% in those patients with prior CVD vs. those without CVD within our follow-up. Previous studies have demonstrated the time-to-onset of atrial fibrillation after ibrutinib initiation to occur within the first year of ibrutinib initiation [26].

The pathophysiology of atrial fibrillation is multifactorial, and various etiologies have shown association with the development of atrial fibrillation. In particular, cardiac conditions associated with persistent inflammation and ischemia have been implicated in the development of atrial fibrillation. Valvular heart disease, congestive heart failure, and coronary artery disease also increase the likelihood of atrial fibrillation. Elevated filling pressures within the atria, either due to hemodynamically significant valvular disease or diminished cardiac function,

Table 1 Baseline characteristics of ibrutinib patients

Variables	Without CVD ^a n = 148 (68%)	CVD n = 69 (32%)	Total N = 217	p-value
Demographics				
Age	70 (63-76)	74 (64-80)	74 (64-81)	0.02
BMI	27 (24-31)	27 (24-31)	27 (23-32)	0.90
Male	63	65	64	0.73
White	93	94	93	0.26
Black	3	0	2	
Unknown/Other	4	6	5	
Comorbidities				
Hypertension	58	83	66	<0.001
Diabetes	18	32	23	0.03
Dyslipidemia	41	67	49	<0.001
Chronic obstructive lung disease	14	26	18	0.023
Cerebrovascular accidents	3	6	4	0.26
Chronic kidney disease	10	16	12	0.22
Liver disease	6	6	6	0.96
Alcohol use	26	25	26	0.79
Tobacco use	53	48	51	0.50
Illicit drug use	3	1	3	0.42
Medications				
Statins	28	54	36	<0.0001
Beta blockers	21	44	28	0.001
Neurohormal blocking agents	29	45	34	0.02
Spirolactone	1	1	1	0.95
Aspirin	17	52	28	<0.001
Warfarin	1	3	1	0.19
Direct oral anticoagulants	7	1	5	0.10
Calcium channel blockers	14	16	14	0.63
Diuretics	20	30	24	0.10
Sodium-glucose cotransporter 2	1	3	2	0.43
Prior chemotherapy use	43	42	43	0.83
CYP3A inhibitors	10	12	10	0.63
CYP3A inducers	0	7	2	0.001
Initial dose				
560 mg daily	17	23	19	0.10
420 mg daily	77	64	73	
280 mg daily	6	13	8	
Cancer diagnoses				
Mantel cell lymphoma	14	19	16	0.65
CLL ^b /SLL	74	70	72	
Marginal zone lymphoma	1	0	1	
Waldenstrom macroglobunemia	5	3	5	
Diffuse large B-cell lymphoma	3	3	3	
Others	2	3	2	

^a Cardiovascular disease; ^bChronic lymphocytic leukemia; ^cSmall lymphocytic lymphoma

leads to eventual chamber dilation and resultant fibrosis. This cardiac remodeling provides the foundation for the electrical disturbances, primarily through ion channel

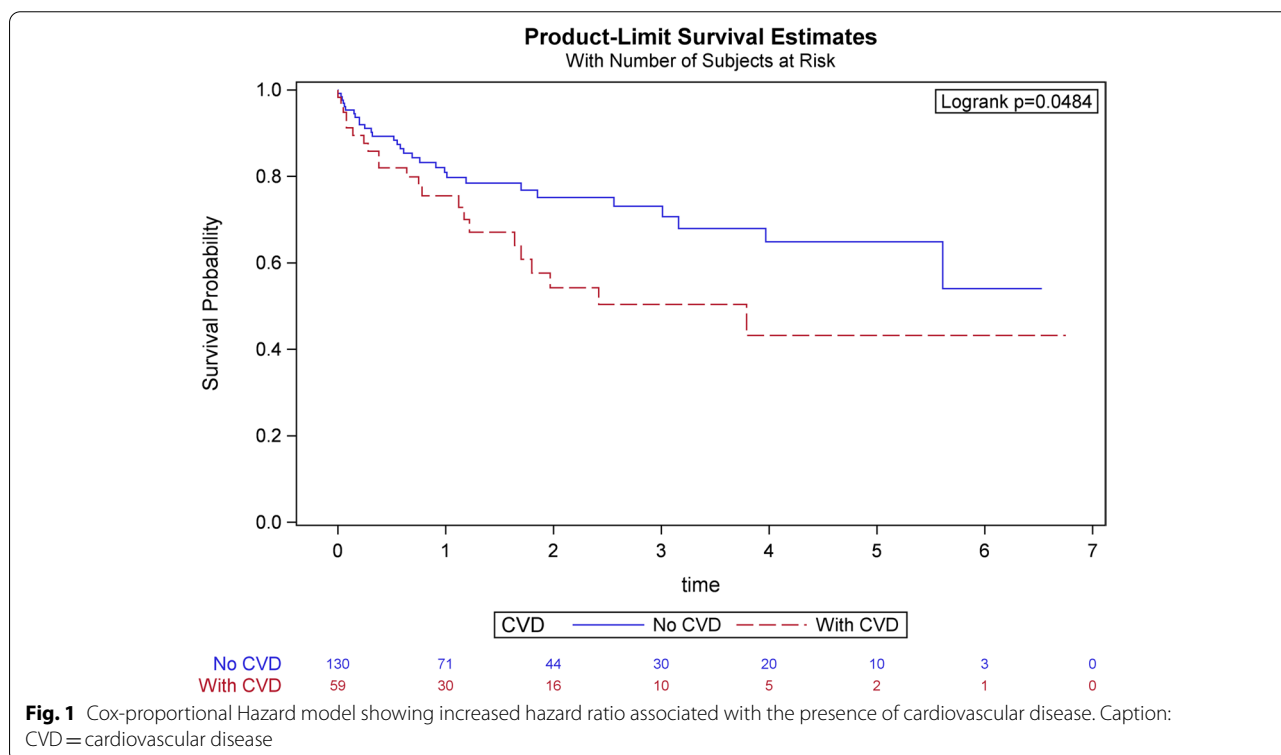
dysfunction and myocyte uncoupling associated with atrial fibrillation [27]. On a molecular level, profibrotic growth factors, such as transforming growth factor-beta1

Table 2 Primary and secondary outcomes

Outcomes	Without CVD	CVD	Total	p-value	Odds ratio (95% Confidence interval)
Afib ^a	7	17	10	0.02	Adjusted: 2.91 (1.19-7.25)
Discontinuation	31	44	35	0.08	Unadjusted: 1.71 (0.95-3.08)
Bleeding	16	19	17	0.65	Unadjusted: 1.20 (0.55-2.61)
					Hazards ratio (95% Confidence interval)
Mortality ^b	23	39	28	0.01	Adjusted: 1.90 (1.06-3.41)

^a Adjusted for age, hypertension, chronic kidney disease, and ibrutinib initiation dose

^b Adjusted for age, new-onset atrial fibrillation, and cancer diagnoses



(TGF-B1) and platelet-derived growth factor/vascular endothelial growth factor (PDGF/VEGF), are upregulated as a result of various cardiac injury [28].

Disruptions in molecular signaling also provide insights into the association of ibrutinib and atrial fibrillation. Through the binding to cysteine 481 residue of BTK, ibrutinib inhibits the dysregulated B-cell receptor signaling responsible for proliferation and survival in B-cell malignancies [29, 30]. BTK is expressed in human cardiac tissue and appears to be expressed greater in patients with atrial fibrillation compared to those in normal sinus rhythm [16, 17], which could explain the pro-arrhythmic effects of ibrutinib in atrial dysrhythmias. Similar sequela of atrial dysfunction has been seen in those with genetic mutations of tyrosine kinase pathways, such

as the KCNA5 mutation which encodes the ultrarapid delayed rectifier potassium channel that then in turn modulates tyrosine kinase signaling [31]. Other in vivo animal studies have suggested that ibrutinib induces atrial fibrillation through structural remodeling and dysregulated calcium handling within atrial myocytes [32].

Our study demonstrates the increased rate of atrial fibrillation and decreased survival in patients with pre-existing CVD initiated on ibrutinib for hematological malignancies. No formal guidelines exist for how to monitor and treat this population, although some strategies have been proposed through the assessment of hemodynamic stability, ECG and echocardiograph findings, and careful assessment of drug-drug interactions in rate/rhythm control pharmacotherapy [33]. While most

studies on the management of atrial fibrillation are in patients without malignancy, cancer patients with atrial fibrillation are at an increased risk of both heart failure and thromboembolism [34]. In addition to anticoagulation medications, rate and rhythm control medications also interact with ibrutinib through the CYP450 CYP3A metabolic pathway, making management of atrial fibrillation difficult [35]. Surveillance electrocardiography in order to identify left atrial abnormalities has been identified as a simple clinical tool, especially in the early stages of treatment [36]. Hypertension is a well-known risk factor for the development of atrial fibrillation in addition to other adverse cardiovascular events, independent of ibrutinib therapy [10, 20]. Routine blood pressure monitoring should also be part of regular surveillance metrics in patients on ibrutinib therapy, especially those with pre-existing hypertension [37, 38]. One study from Roeker et al. revealed that patients on ibrutinib therapy experienced increased systolic and diastolic blood pressure readings within the first year of ibrutinib initiation, with up to 21 mmHg median change in systolic blood pressure and 8.5 mmHg in diastolic blood pressure [39]. Clinicians should be aware of this effect in order to

mitigate the potential for new onset or worsening hypertension in patients on ibrutinib, with special attention to the acute post-initiation period. More studies are warranted to help create sound clinical guidelines for the management of atrial fibrillation in patients being treated with ibrutinib with careful consideration to stroke risk and other cardiac complications.

Limitations

Our study was limited due to a relatively small sample size and inherent nature of retrospective studies. Additionally, our search for patients on ibrutinib was limited to our institutional EMR only. From the chart review, it was difficult to locate exact dates or timing of atrial fibrillation, and “time-to-event” was not possible. Our decision to include patients with various cardiac conditions was based on our referral patterns, but future studies should focus on the impact of specific cardiovascular conditions on ibrutinib patients. Many echocardiographic variables, such as atrial size, are not available since the majority of patients did not undergo routine echocardiography before and while on ibrutinib. Therefore, we couldn’t adjust for these variables.

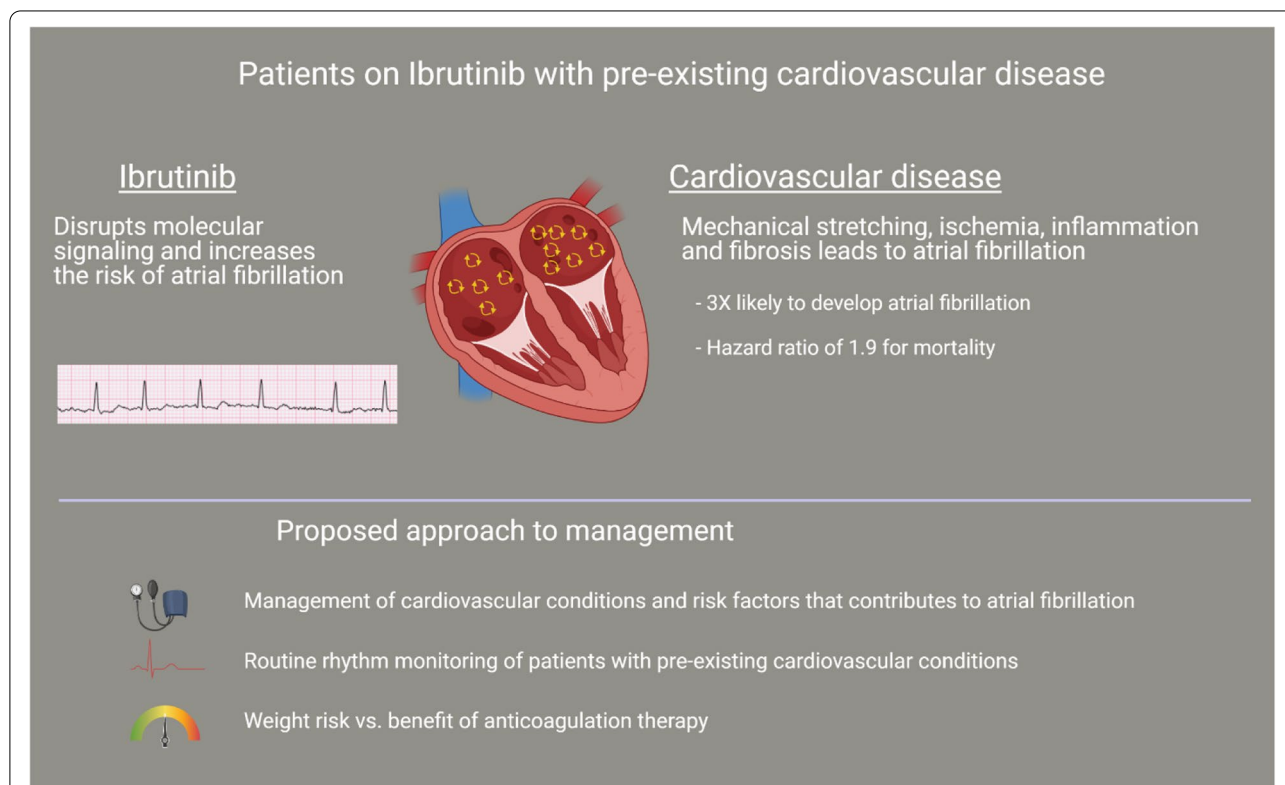


Fig. 2 The patient with concomitant cardiovascular disease receiving ibrutinib are more likely to develop atrial fibrillation. This owes to both underlying cardiovascular condition related changes as well as the disruption in molecular signaling. We propose that the patients should be screened and managed for pre-existing cardiovascular conditions prior to initiating ibrutinib. Atrial fibrillation can be asymptomatic and associated with increased risk of thromboembolic events. And, therefore, we recommend rhythm screening for patients with cardiovascular conditions

Our study highlights important implications for management of patients on Ibrutinib. While our study did not reveal statistically significant differences in bleeding events between the two cohorts, predisposition to bleeding is a well-known side effect of ibrutinib [40, 41]. This must be taken into consideration when either initiating, continuing, or terminating anticoagulation therapy for stroke and thromboembolic prevention in patients receiving ibrutinib therapy, as certain groups of patients may already be receiving antiplatelet therapy. This also presents a clinical conundrum in the decision of whether to discontinue ibrutinib at the expense of progressive oncologic disease or to continue ibrutinib treatment with the risk of cardiovascular compromise. Our study did not reveal a difference in the rate of ibrutinib discontinuation in our two cohorts; however, atrial fibrillation remains the most common cause of ibrutinib discontinuation in treated patients [42, 43].

Conclusions

Cardio-oncology has emerged as a quickly growing specialty to help manage patients with malignancy and cardiovascular comorbidities. We highly encourage hematology-oncologists to work together with cardio-oncologists in a multi-disciplinary setting for effective management of patients on ibrutinib therapy. Through early identification of cardiac disease, assessment of cardiovascular structure and function, optimization of cardiovascular risk factors, and the utilization of surveillance testing such as serial electrocardiogram during treatment (Fig. 2), cardio-oncologists play a vital role in the prevention and management of cardiotoxicity in cancer patients.

Abbreviations

CVD: Cardiovascular disease; AF: Atrial fibrillation; GvHD: Graft versus host disease; CLL: Chronic lymphocytic leukemia; BTK: Bruton's tyrosine kinase; ECG: electrocardiogram; CAD: Coronary artery disease; CI: Confidence interval.

Acknowledgements

The authors would like to thank West Virginia University Department of Medicine, Department of Cardiology, and WVU Cancer Center for continued support in the preparation of this manuscript.

Authors' contributions

JCA collected data, prepared the tables, and wrote the manuscript. JF collected data and wrote the manuscript. TM collected data and provided manuscript revisions. SD collected data and provided manuscript revisions. CW collected data and provided manuscript revisions. SI collected data and provided manuscript revisions. CB provided significant manuscript revisions and authorship. LV provided significant manuscript revisions and authorship. WF provided significant manuscript revisions and additional data analysis. MC provided significant manuscript revisions and authorship. AK provided significant manuscript revisions and authorship. KR provided significant manuscript revisions and authorship. MM provided significant manuscript revisions, interpretation of data, and authorship. BP designed the work, led the study, provided data analysis, and wrote the manuscript. Each author approved the

submitted version and agree to be accountable for their personal contributions and integrity of the paper.

Funding

Dr. Midhun Malla's research work in this publication was supported by the National Institute of General Medical Sciences of the National Institutes of Health under award number 5U54GM104942-05. The content is solely the responsibility of the authors and does not necessarily represent the official views of the National Institutes of Health.

Availability of data and materials

The datasets used and/or analyzed during the current study are available from the corresponding author on reasonable request. This is subject to the institutional data sharing policy.

Declarations

Ethics approval and consent to participate

Ethics approval and consent was obtained from our health systems' Institutional Review Boards (IRB).

Consent for publication

Not applicable.

Competing interests

The authors declare that they have no competing interests.

Author details

¹West Virginia University School of Medicine, Morgantown, USA. ²West Virginia University Heart and Vascular Institute, Morgantown, WV 26506, USA. ³West Virginia University Mary Babb Randolph Cancer Institute, Morgantown, USA. ⁴West Virginia Clinical and Translational Science Institute, Morgantown, USA.

Received: 17 May 2021 Accepted: 9 November 2021

Published online: 19 November 2021

References

- Wang M, Rule S, et al. Targeting BTK with Ibrutinib in relapsed or refractory mantle-cell lymphoma. *N Engl J Med*. 2013;369:507–16. <https://doi.org/10.1056/NELMoa1306220>.
- Woyach JA, Ruppert AS, Heerema NA, et al. Ibrutinib regimens versus Chemoimmunotherapy in older patients with untreated CLL. *N Engl J Med*. 2018;379:2517–28. <https://doi.org/10.1056/NEJMoa1812836>.
- Dimopoulos M, Tedeschi A, et al. Phase 3 trial of Ibrutinib plus rituximab in Waldenstrom's Macroglobulinemia. *N Engl J Med*. 2018;378:2399–410. <https://doi.org/10.1056/NEJMoa1802917>.
- Miklos D, Cutler C, et al. Ibrutinib for chronic graft-versus-host disease after failure of prior therapy. *Blood*. 2017;130:2243–50. <https://doi.org/10.1182/blood-2017-07-793786>.
- Kim ES, Dhillon S. Ibrutinib: a review of its use in patients with mantle cell lymphoma or chronic lymphocytic Leukaemia. *Drugs*. 2015;75:769–76. <https://doi.org/10.1007/s40265-015-0380-3>.
- Shatzel JJ, Olson SR, Tao DL, McCarty OJT, Danilov AV, DeLoughery TG. Ibrutinib-associated bleeding: pathogenesis, management and risk reduction strategies. *J Thromb Haemost*. 2017;15(5):835–47. <https://doi.org/10.1111/jth.13651>.
- Varughese T, Taur Y, Cohen N, et al. Serious infections in patients receiving Ibrutinib for treatment of lymphoid Cancer. *Clin Infect Dis*. 2018;67(5):687–92. <https://doi.org/10.1093/cid/ciy175>.
- Rogers KA, Ruppert AS, Bingman A, et al. Incidence and description of autoimmune cytopenias during treatment with ibrutinib for chronic lymphocytic leukemia. *Leukemia*. 2016;30(2):346–50. <https://doi.org/10.1038/leu.2015.273>.
- Gashonia LM, Carver JR, O'Quinn R, et al. Persistence of ibrutinib-associated hypertension in CLL pts treated in a real-world experience. *J Clin Oncol*. 2017;35(15_suppl):7525. https://doi.org/10.1200/JCO.2017.35.15_suppl.7525

10. Dickerson T, Wiczer T, Waller A, et al. Hypertension and incident cardiovascular events following ibrutinib initiation. *Blood*. 2019;134(22):1919–28. <https://doi.org/10.1182/blood.2019000840>.
11. Titus-Rains KS, Brown JN, Hammond JM. Ibrutinib-associated tumor lysis syndrome in chronic lymphocytic leukemia/small lymphocytic lymphoma and mantle cell lymphoma: a case series and review of the literature. *J Oncol Pharm Pract*. 2018;24(7):544–9.
12. Lampson BL, Yu L, Glynn RJ, et al. Ventricular arrhythmias and sudden death in patients taking ibrutinib. *Blood*. 2017;129(18):2581–4. <https://doi.org/10.1182/blood-2016-10-742437>.
13. Ganatra S, Sharma A, Shah S, Chaudhry GM, et al. Ibrutinib-associated atrial fibrillation. *JACC Clin Electrophysiol*. 2018;4(12):1491–500. <https://doi.org/10.1016/j.jacep.2018.06.004>.
14. Vrontikis A, Carey J, Gilreath JA, Halwani A, Stephens DM, Sweetenham JW. Proposed algorithm for managing Ibrutinib-related atrial fibrillation. *Oncology (Williston Park)*. 2016;30(11):970–C3.
15. Tuomi JM, Xenocostas A, Jones DL. Increased susceptibility for atrial and ventricular cardiac arrhythmias in mice treated with a single high dose of Ibrutinib. *Can J Cardiol*. 2018;34(3):337–41. <https://doi.org/10.1016/j.cjca.2017.12.001>.
16. McMullen JR, Boey EJH, Ooi JYY, Seymour JF, Keating MJ, Tam CS; Ibrutinib increases the risk of atrial fibrillation, potentially through inhibition of cardiac PI3K-Akt signaling. *Blood* 2014;124(25):3829–3830. <https://doi.org/10.1182/blood-2014-10-604272>
17. Pretorius L, Du XJ, Woodcock EA, et al. Reduced phosphoinositide 3-kinase (p110alpha) activation increases the susceptibility to atrial fibrillation. *Am J Pathol*. 2009;175(3):998–1009. <https://doi.org/10.2353/ajpath.2009.0901126>.
18. Lakshminarayan K, Anderson DC, Herzog CA, Qureshi AI. Clinical epidemiology of atrial fibrillation and related cerebrovascular events in the United States. *Neurologist*. 2008;14(3):143–50. <https://doi.org/10.1097/NRL.0b013e31815cfaae>.
19. Michniewicz E, Mlodawska E, Lopatowska P, et al., Patients with atrial fibrillation and coronary artery disease – Double trouble. *Adv Med Sci*. 2018;63 (1):30-35. <https://doi.org/10.1016/j.advms.2017.06.005>.
20. Nattel S, Dobrev D. Electrophysiological and molecular mechanisms of paroxysmal atrial fibrillation. *Nat Rev Cardiol*. 2016;13(10):575–90. <https://doi.org/10.1038/nrcardio.2016.118>.
21. Lip GYH, Fauchier L, Freedman SB, et al. Atrial fibrillation. *Nat Rev Dis Prim*. 2016;2(1):16016. <https://doi.org/10.1038/nrdp.2016.16>.
22. Brown J, Moslehi J, O'Brien S, et al. Characterization of atrial fibrillation adverse events reported in ibrutinib randomized controlled registration trials. *Haematologica*. 2017;102(10):1796–805. <https://doi.org/10.3324/haematol.2017.171041>.
23. Leong D, Caron F, Christopher Hillis, Annie Duan, Jeff S. Healey, Graeme Fraser, Deborah Siegal; the risk of atrial fibrillation with ibrutinib use: a systematic review and meta-analysis. *Blood*. 2016;128(1):138–40. <https://doi.org/10.1182/blood-2016-05-712828>.
24. Diamond A, Bensken WP, Dong W, Markt SC, Koroukian SM, Caimi P. Three-Fold Risk of Atrial Fibrillation in Ibrutinib Treated CLL Patients without Increased Risk of Stroke: A SEER-Medicare Database Analysis. *Blood*. 2020;136(Supplement 1):18–19. <https://doi.org/10.1182/blood-2020-141287>
25. Wiczer TE, Levine LB, Brumbaugh J, et al. Cumulative incidence, risk factors, and management of atrial fibrillation in patients receiving ibrutinib. *Blood Adv*. 2017;1(20):1739–1748. <https://doi.org/10.1182/bloodadvances.2017009720>.
26. Reda G, Fattizzo B, Cassin R, et al. Predictors of atrial fibrillation in ibrutinib-treated CLL patients: A prospective study. *J Hematol Oncol Published online* 2018. <https://doi.org/10.1186/s13045-018-0626-0>.
27. Wakili R, Voigt N, Käbb S, Dobrev D, Nattel S. Recent advances in the molecular pathophysiology of atrial fibrillation. *J Clin Invest*. 2011;121(8):2955–68. <https://doi.org/10.1172/JCI46315>.
28. Burstein B, Nattel S. Atrial fibrosis: mechanisms and clinical relevance in atrial fibrillation. *J Am Coll Cardiol*. 2008;51(8):802–9. <https://doi.org/10.1016/j.jacc.2007.09.064>.
29. Parmar S, Patel K, Pinilla-Ibarz J. Ibrutinib (imbruvica): a novel targeted therapy for chronic lymphocytic leukemia. *PT*. 2014;39(7):483–519.
30. Burger JA, Tedeschi A, Barr PM, et al. Ibrutinib as initial therapy for patients with chronic lymphocytic leukemia. *N Engl J Med*. 2015;373(25):2425–37. <https://doi.org/10.1056/NEJMoa1509388>.
31. Yang T, Yang P, Roden DM, Darbar D. Novel KCNA5 mutation implicates tyrosine kinase signaling in human atrial fibrillation. *Heart Rhythm*. 2010;7(9):1246–52. <https://doi.org/10.1016/j.hrthm.2010.05.032>.
32. Jiang L, Li L, Ruan Y, et al. Ibrutinib promotes atrial fibrillation by inducing structural remodeling and calcium dysregulation in the atrium. *Heart Rhythm*. 2019;16(9):1374–82. <https://doi.org/10.1016/j.hrthm.2019.04.008>.
33. Ganatra S, Sharma A, Shah S, et al. Ibrutinib-Associated Atrial Fibrillation. *J Am Coll Cardiol Clin Electrophysiol*. 2018;4(12):1491–1500. <https://doi.org/10.1016/j.jacep.2018.06.004>.
34. Hu YF, Liu CJ, Chang PM, et al. Incident thromboembolism and heart failure associated with new-onset atrial fibrillation in cancer patients. *Int J Cardiol*. 2013;165(2):355–7. <https://doi.org/10.1016/j.ijcard.2012.08.036>.
35. Finnes HD, Chaffee KG, Call TG, et al. Pharmacovigilance during ibrutinib therapy for chronic lymphocytic leukemia (CLL)/small lymphocytic lymphoma (SLL) in routine clinical practice. *Leuk Lymphoma*. 2017;58(6):1376–83. <https://doi.org/10.1080/10428194.2016.1251592>.
36. Mato AR, Clasen S, Pickens P, et al. Left atrial abnormality (LAA) as a predictor of ibrutinib-associated atrial fibrillation in patients with chronic lymphocytic leukemia. *Cancer Biol Ther*. 2018;19:1–2.
37. Caldeira D, Alves D, Costa J, Ferreira JJ, Pinto FJ. Ibrutinib increases the risk of hypertension and atrial fibrillation: Systematic review and meta-analysis. *PLoS One*. 2019;14(2). <https://doi.org/10.1371/journal.pone.0211228>
38. Jones J, George B, Peterson CB, et al. Long-term effects of ibrutinib on blood pressure in patients with chronic lymphocytic leukemia (CLL). *J Clin Oncol*. 2019;37(15).
39. Roeker LE, Sarraf Yazdy M, Rhodes J, et al. Hypertension in patients treated with ibrutinib for chronic lymphocytic leukemia. *JAMA Netw Open*. 2019;2(12):e1916326–6. <https://doi.org/10.1001/jamanetworkopen.2019.16326>.
40. Boriani G, Corradini P, Cuneo A, et al. Practical management of ibrutinib in the real life: focus on atrial fibrillation and bleeding. *Hematol Oncol*. 2018;36:624–32.
41. Lipsky AH, Farooqui MZH, Tian X, et al. Incidence and risk factors of bleeding-related adverse events in patients with chronic lymphocytic leukemia treated with ibrutinib. *Haematologica*. 2015;100(12):1571–8. <https://doi.org/10.3324/haematol.2015.126672>.
42. Jain P, Thompson PA, Keating M, et al. Long-term outcomes for patients with chronic lymphocytic leukemia who discontinue ibrutinib. *Cancer*. 2017;123(12):2268–73. <https://doi.org/10.1002/cncr.30596>.
43. Khalid S, Yasar S, Khalid A, Spiro TP, Haddad A, Daw H. Management of Atrial Fibrillation in Patients on Ibrutinib: A Cleveland Clinic Experience. *Cureus*. 2018;10(5). <https://doi.org/10.7759/cureus.2701>.

Publisher's Note

Springer Nature remains neutral with regard to jurisdictional claims in published maps and institutional affiliations.